

ASD Proposal - Primrose Hill Primary School



Wednesday 7th November 5 - 7pm

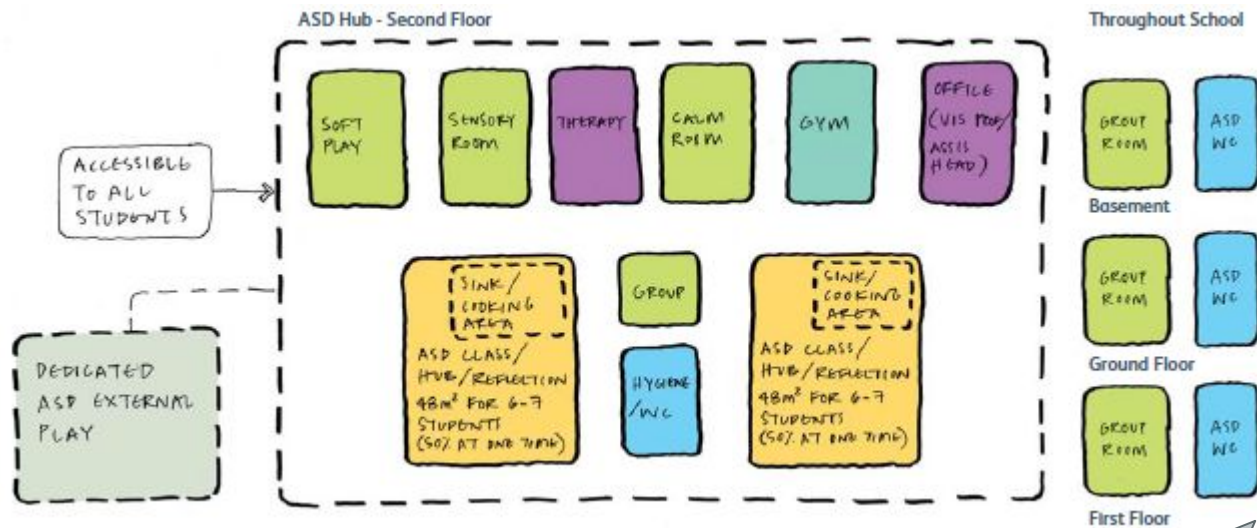
Rationale

Camden Council wish to expand the number of spaces for children with ASD across the borough. In partnership with Primrose Hill, the proposal is to develop a new provision for up to 14 children (2 children per year group) who have autism.

This would begin with 2 Reception children in September 2019, growing each year by two children until 2025.

ASD stands for *additional resourced provision* but the work with these children would be in partnership with the mainstream school and classrooms through with additional specialist facilities.

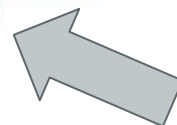
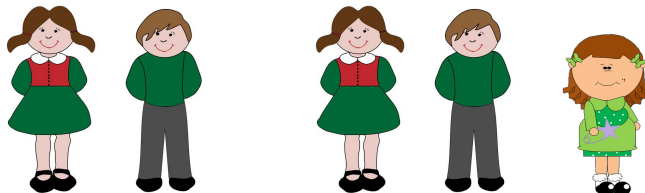
Robin visited a number of schools to determine the best model for the school.



Fundamentally, this provision is morally right for the school. There are many children with ASD who do not have an appropriate school place.

What this means for Primrose Hill?

- Inclusive and flexible provision
- Further enhancing the work we do



What this means for the school?

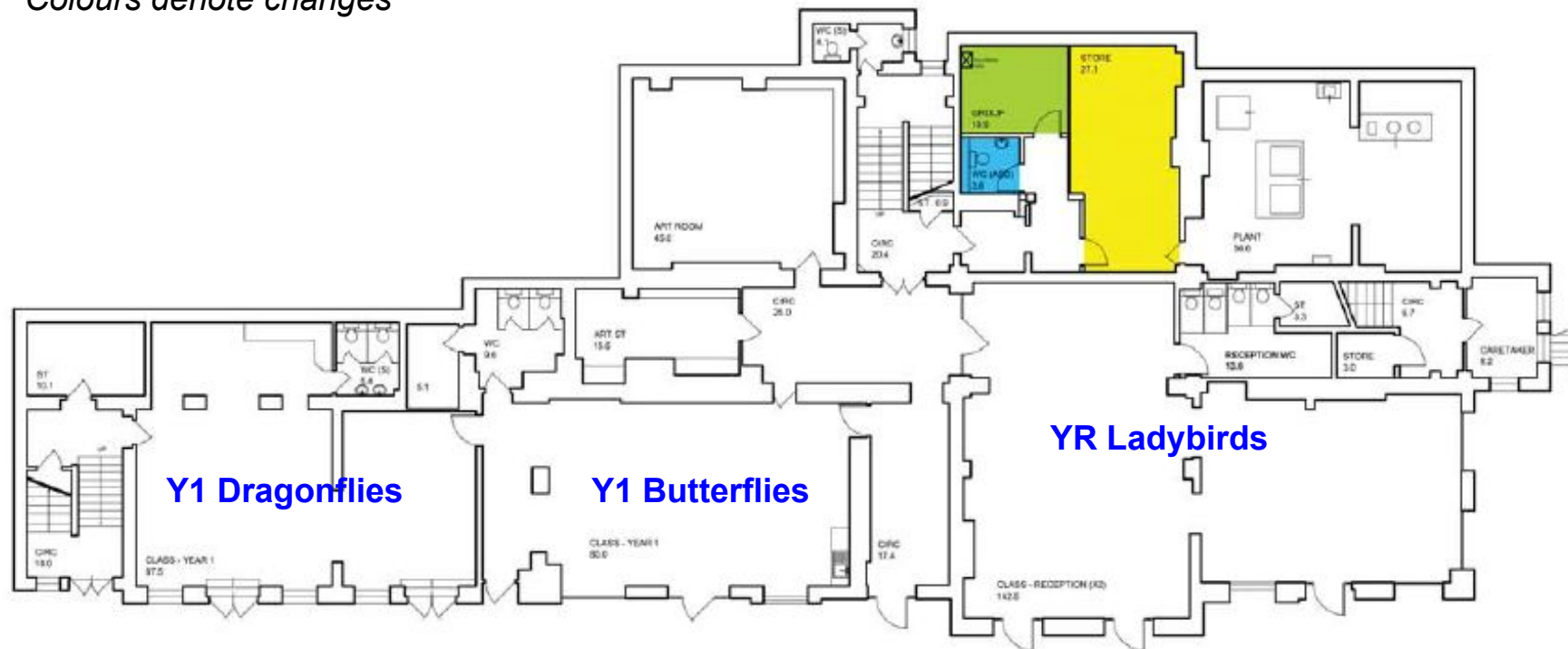
A number of improvements would be made as part of the proposal that would benefit all pupils:

- Acoustic treatments to help absorb noise
- A hub on the 2nd floor incl. Gym, therapy room, soft play and a calm room
- Group rooms on each floor near to their chronological age group classroom
- Improvements to the dining area
- Improved toilet facilities including accessible toilets
- Adaptation of the playground to create a dedicated new space

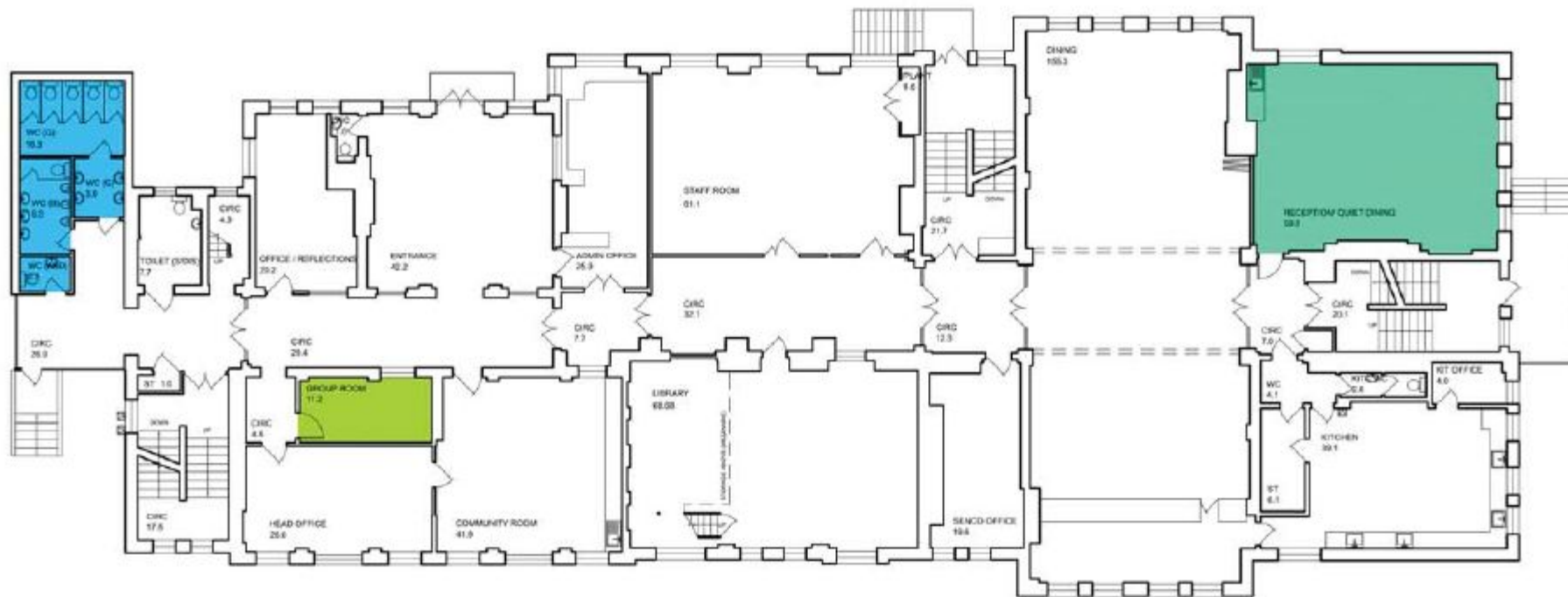
Improvements would be carried out with as little disruption to the school and its community as possible - starting in Summer Term 2019 and complete by the end of the Autumn Term 2019.

Basement

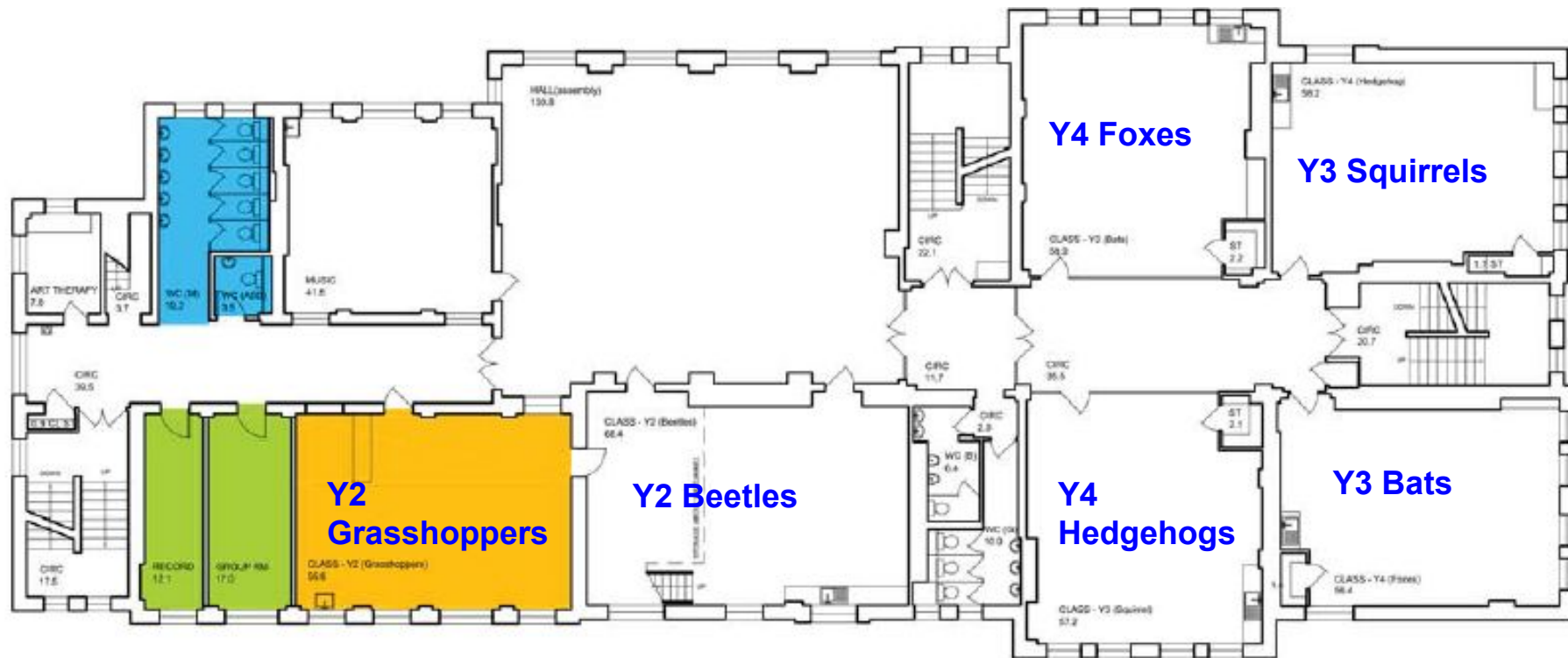
Colours denote changes



Ground Floor / Street Level



First Floor



Admissions

The provision would begin with 2 Reception children in September 2019, followed by 2 more Reception children each September.

Admissions would be controlled by Camden's High Needs panel, determining which provision in Camden would be appropriate for the children (there are ASD provisions at Netley and Kentish Town and others planned in Camden).

We would consider drop off and collection times to best support the children and their families.

Staffing

Our staffing structure would be amended to facilitate, this including expanding the SLT, specialist teacher, support staff etc.

Next Steps

Questions?