



KS1
Meet the Teacher Meeting

Meet The Staff



Class Teachers

Becca Ehrlich

Grasshoppers Class Teacher

Chrystal Vidal

Beetles Class Teacher

Sophie Tait

Butterflies Class Teacher

Jacob Barnes

Dragonflies Class Teacher

Mary Deavin

Cover and Intervention Teacher

Teaching Assistants

**Kim Squires, Ana Garrido Gigorro, Amal Ahmed, Tanya Santos Lopes,
Lee Strobe, Gem Saunders**

Additional Adults

Liz Ghamar, Mireille Alwan & Syra Sowe— Assistant Head Teachers

Mandy Aplicano – Leader of Learning for SEMH/ Rainbow

Edina Dias Souza – Leading of Learning for Children, Families & the Community

Jordan Lawal & Dean Farrell— PE Coach

Tom West— Music Teacher

News

- Nursery refurbishment
- Reception outside classroom development
- Lower playground equipment
- Building work for the ARP
- SIP published shortly

Important Information

The School Day



8:45am – soft start

9am – school starts

9-10:35am- first session

10:35- 10:50am- break

10:50-12noon – second session

12noon-1pm – lunch

1-3:30pm- third session

3:15pm- gates open for all parents/carers. Children will come to the line at 3:30pm.

Please wait on your child's line at the end of the day as it is important that the class teacher knows who they go home with.

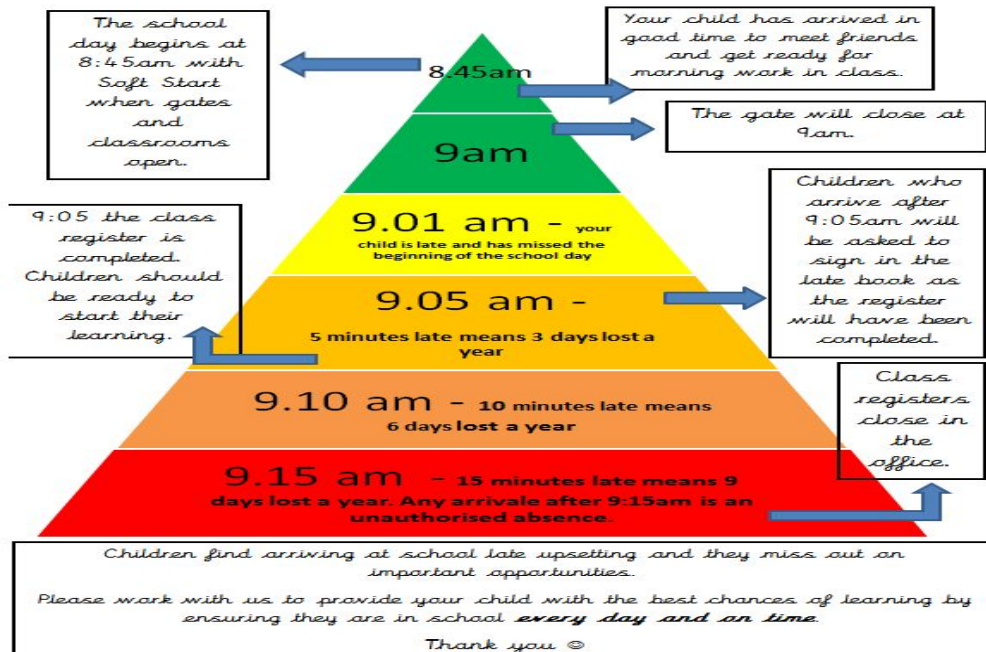


Attendance & Punctuality



Primrose Hill Primary School

Every minute of learning counts!

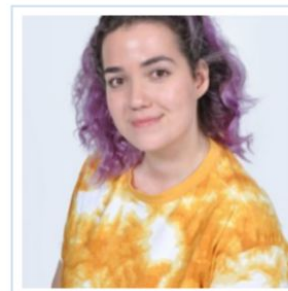


- Attendance & Punctuality are extremely important in ensuring your child reaches their potential; if they're not at school, they're missing key learning opportunities!

- If your child is sick please:
 - inform the school before 9am on the morning of the first day of absence
 - phone the absence line on 0207 722 8500 / email: attendance@primrosehill.camden.sch.uk
 - keep the school informed if your child's absence persists

- We want to achieve over 96% attendance each week! This will continue to be monitored weekly in Achievement Assemblies & in the newsletter.

100%	Perfect -the best they can possibly be!
98 - 99%	Excellent
95 - 97%	Good
90 -94%	Needs to improve and will be monitored closely within school next year
89% or less	Poor - this will lead to a referral to the Education Welfare Officer, a subsequent meeting and potential legal action from the local authority if persists to be low in the next academic year



Lyra Semsedini
Admissions & Attendance Officer

Behaviour Expectations



Our **Behaviour Policy and Procedures** encourage mutual respect through a code of acceptable behaviour understood by everyone in the school.

Primrose Promises

Use your growth mindset

Include others

Be respectful

Take responsibility

Look after our environment



Rewards

Rewards are given to praise children for acting responsibly and for following the Golden Rules. Other systems include:

- Class Dojos
- Star of the Week
- Achievement Assembly
- Phase & Class Celebrations
- Showing another adult
- Good as Gold

What happens when things go wrong?

- Reminded of school rules
- Firmer warning
- Time out to other class
- Further time out to Phase Leader
- Time out to member of the SLT / LoL SEBN

Red Card

- Hurting another child deliberately
- Extremely violent behaviour / vandalism
- Fighting
- Leaving the classroom without permission to an unknown location / running away / refusing to return to class within a specified time (e.g. five minutes)
- Swearing at an adult or a child

....Reflection



Assessment & Progress

- Summative and formative assessment throughout the year
- Monitoring and Pupil Progress Reviews
- Parent consultations and reports
- Year 1 - Phonics Check in June
- Year 2 - KS1 SATs - all of May. Reading & Maths Tests and Writing Teacher Assessment.

Inclusion & Medical Needs



SEN SUPPORT

SENDCo, parents and teachers will meet to agree:

- *Specific interventions and targets for your child*
- *Outside agency support for your child*
- *Additional adult support in school*

syra.sowe@primrosehill.camden.sch.uk

School Budget

Comparatively, PH is doing ok financially. Other local schools are suffering.

We had a budget shortfall of £292k when setting the budget - affected by rising pension and operational costs, multiple maternity leaves, unfunded pay rises, general increase in expenditure and less than inflation income plus reduction in SEN funding.

Our key points:

- Strong pupil numbers - other local schools seeing falling roll*
- High SEN - both challenge & a strength*
- Reduce support staff*
- ARP - brings additional income and building benefits*
- Nurseries*
- Additional income through external work*
- Changes are inevitable - not replacing Art or French at present / reduction in cover teacher days, curriculum budgets, school journey, reduction in bought in therapy and general slicing of all budget cost centres.*

The Curriculum & How We Work

Important Information

PE **Friday** - Children must to come to school in their P.E. kit.



EXTRA PE **Monday** - Children must to come to school in comfortable clothes and sensible shoes.

TALK TO TEACHER

Monday 3:15pm

LIBRARY DAY **Thursday**

Children must bring a book bag or rucksack every day.

MARY IN BEETLES **Thursday AM**



A Broad, Balanced and Creative Integrated Curriculum



Investigating



Practising



Questioning



Collaborating

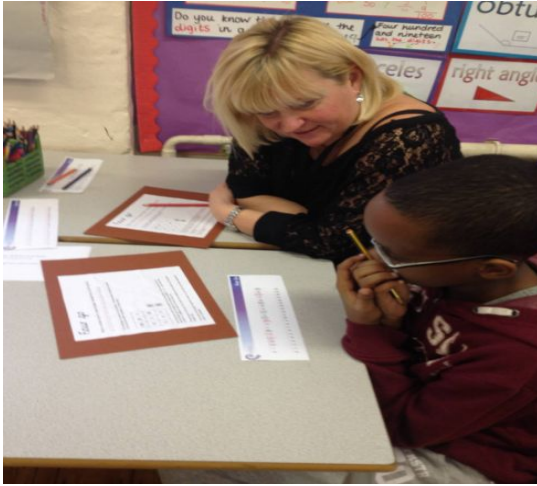


Playing



Exploring and
experimenting

Encouraging independence, confidence and co-operation



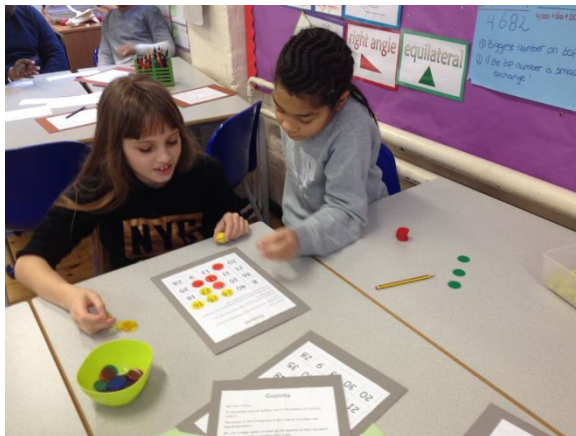
Working with an adult



Working independently



Working and playing co-operatively



Working with a friend



Learning Outside

Topics

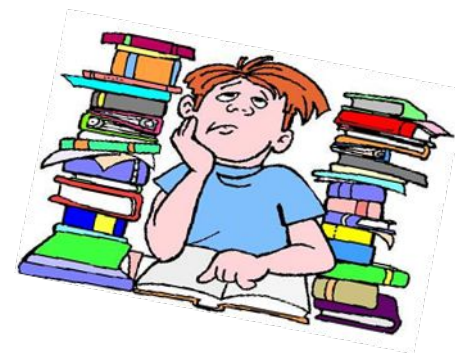
Let's visit London
London Past
Sustainable Fashion
Habitats
By the Sea

Weekly Timetable

Year 2 Weekly Timetable

	Monday Meet the Teacher 3.15	Tuesday	Wednesday	Thursday Library – GH am, Beetles pm	Friday
8:45 – 9:00	Soft Start: take-home readers/free-choice reading/handwriting/spelling				
	PSHCE	English	English	English	English: Word Knowledge and Quiz
	Integrated Learning	Integrated Learning	Integrated Learning	Integrated Learning	Integrated Learning
10:15 – 10:35	SEAL Assembly	Handwriting	Handwriting	Music Assembly	Achievement Assembly
10:35 – 10:50	Play				
10:50 – 12:00	Maths	Maths	Maths	Maths	English: Big Writing
	Integrated Learning	Integrated Learning	Integrated Learning	Integrated Learning	
12:00 – 1:00	Lunchtime				
1:00 – 1:30	Topic	Handwriting	Handwriting	Handwriting	PE/Music
1:30 – 2:00	Extra PE	Guided Reading	Guided Reading	Guided Reading	
2:00 – 2:30		Topic	Topic	Golden Time/1:1 Reading/Conferencing	
2:30 – 3:00	Guided Reading	Integrated Learning	Integrated Learning		
3:00 – 3:30	Story	Circle Time	Phase Assembly		

Home Learning



HOME LEARNING

Summer 2 Week 2

Year 2

Date due: Friday 21st June 2019



READING

- Read your book every day! Get your adults to ask you questions about what you read. Do the reading and questions on the sheet in your pack.



SPELLING PHONICS

Can you write these in joined writing?

pencil fossil nostril pupil April
gerbil lentil stencil utensil basil



TOPIC

Make a map of a room and then write some instructions about how to get to different places in it using the points of the compass and the positional language we have been learning, starting from the door.



MATHS

Ask your adults if you can borrow a £5, £10 or £20 pound note to look at. What things can you see on the note?

Count the money, and work out the total of all the coins!



Work out the total of the coins below:

$$10p + 10p + 10p + 1p = \underline{\quad} p$$

$$20p + 10p + 5p + 5p + 2p = \underline{\quad} p$$

$$20p + 10p + 5p + 5p + 1p = \underline{\quad} p$$

$$20p + 5p + 5p + 5p + 2p = \underline{\quad} p$$



Reading Diaries - Daily

Children need to be reading at home every night.

They can read by themselves or to you, but an adult should write in the diary to record each time they read. This is to reinforce to the children how important it is to keep practising their reading.

Being able to read confidently opens up all areas of learning!

QUESTIONS?



- Please remember to refer to the school's website for:
 - Letters Home
 - Presentations
 - Dates on Calendar
 - Clubs Information
 - All Policies & Procedures