



Year 6
Meet the Teacher Meeting

Meet The Staff



Class Teachers:

Nabila Harti

Herons Class Teacher

Marianne Mattinson

Kestrels Class Teacher

Leader of Learning for English

Teaching Assistants:

Shilpa Diraji, Melanie Havemann, Tiss Dardak, Saskia Devore & Carly Chaman

Additional Adults:

Liz Ghamar, Mireille Alwan & Syra Sowe– Assistant Head Teachers

Mandy Aplicano – Leader of Learning for SEMH/ Rainbow

Edina Dias Souza – Leading of Learning for Children, Families & the Community

Jordan Lawal & Dean Farrell– PE Coach

Tom West– Music Teacher

News

- Nursery refurbishment
- Reception outside classroom development
- Lower playground equipment
- Building work for the ARP
- SIP published shortly

Important Information

The School Day



8:45am – soft start

9am – school starts

9-10:35am- first session

10:35- 10:50am- break

10:50-12:30pm – second session

12:30-1:30pm – lunch

1:30-3:30pm- third session

3:15pm- gates open for all parents/carers. Children will come to the line at 3:30pm.

Please wait on your child's line at the end of the day as it is important that the class teacher knows who they go home with.

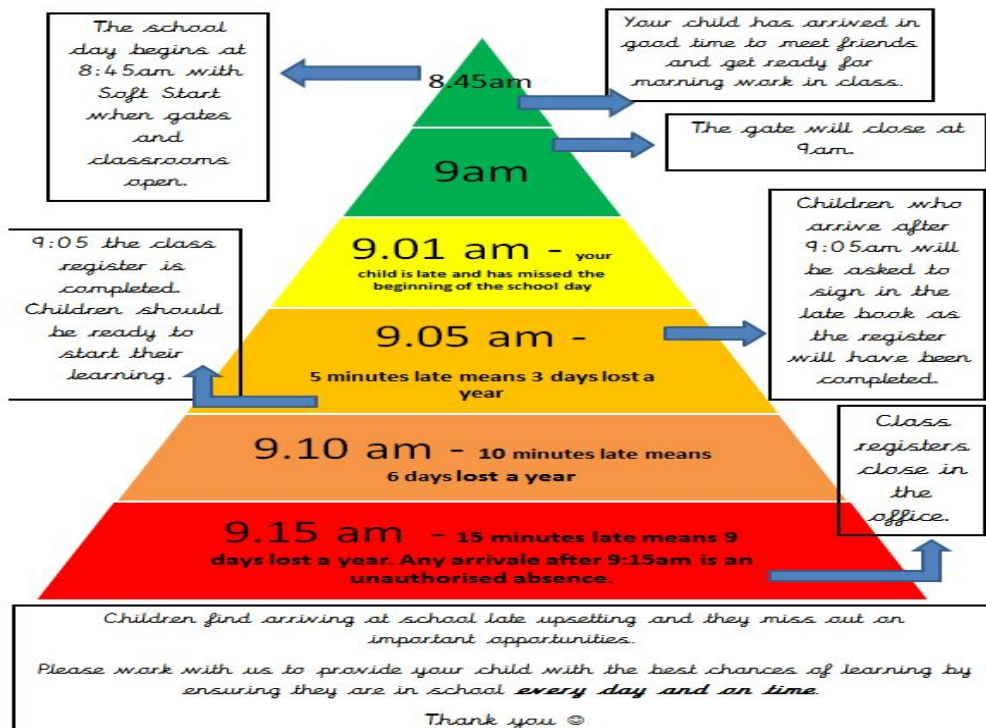


Attendance & Punctuality



Primrose Hill Primary School

Every minute of learning counts!



• Attendance & Punctuality are extremely important in ensuring your child reaches their potential; if they're not at school, they're missing key learning opportunities!

• If your child is sick please:

- inform the school before 9am on the morning of the first day of absence
- phone the absence line on 0207 722 8500 / email: attendance@primrosehill.camden.sch.uk
- keep the school informed if your child's absence persists

• We want to achieve over 96% attendance each week! This will continue to be monitored weekly in Achievement Assemblies & in the newsletter.

100%

Perfect -the best they can possibly be!

98 - 99%

Excellent

95 - 97%

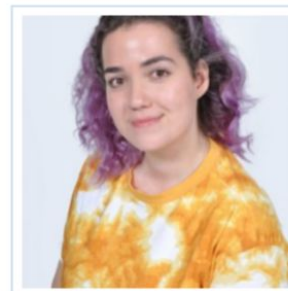
Good

90 - 94%

Needs to improve and will be monitored closely within school next year

89% or less

Poor - this will lead to a referral to the Education Welfare Officer, a subsequent meeting and potential legal action from the local authority if persists to be low in the next academic year



Lyra Semsedini

Admissions & Attendance Officer

Behaviour Expectations



Our **Behaviour Policy and Procedures** encourage mutual respect through a code of acceptable behaviour understood by everyone in the school.

Primrose Promises

Use your growth mindset

Include others

Be respectful

Take responsibility

Look after our environment





Assessment & Progress

- Summative and formative assessment throughout the year
- Monitoring and Pupil Progress Reviews
- Parent consultations and reports
- Key Stage 2 SATS

Inclusion & Medical Needs



SEN SUPPORT

SENDCo, parents and teachers will meet to agree:

- *Specific interventions and targets for your child*
- *Outside agency support for your child*
- *Additional adult support in school*

syra.sowe@primrosehill.camden.sch.uk

Secondary School Application

Please see this website for information about Secondary Schools open mornings / afternoons and much more:

Camden schools: Bright futures

Date And Time
Thu, 19 September 2019
16:00 – 18:30 BST
[Add to Calendar](#)

Location
Swiss Cottage Library
88 Avenue Road
London
NW3 3HA
[View Map](#)

Camden Sign in / Register Services Menu

Home / Education / Schools and children's learning / Schools admissions / Secondary admissions

Secondary admissions

Primary to secondary school transfer

[f](#) [t](#) [in](#) [v](#)

Moving on to secondary school

Whether it's a place at a top university, an excellent apprenticeship or landing a great job, the high quality teaching and supportive environment at Camden's secondary schools aims to help every student reach their potential. All Camden secondary schools are currently rated either 'good' or 'outstanding' by Ofsted.

Read our latest guide to secondary schools in Camden:

Download [Secondary schools in Camden guide – applying for a Year 7 place for September 2020](#) (PDF)

Your child will be due to start secondary school in September 2020 if they were born between 1 September 2008 and 31 August 2009.

Applications for Year 7 places will be open from 1 September 2019 until the deadline of 31 October 2019.

[Apply online for a Year 7 place for September 2020](#)

Moving On Event 2019

Camden's annual [Moving On event](#) to help primary parents choose secondary school places for their children will be at Swiss Cottage Library on Thursday 19 September, from 4 to 6.30pm.

The event, organised by the Council's admissions team with local secondary schools, is parents' opportunity to:

Related pages

- [Contact the schools admissions team](#)
- [Register for your free place at our Moving On to Secondary School event for parents](#)
- [Meet the Parents' informal forums for parents applying for secondary school places](#)
- [How far do I live from a Camden school?](#)
- [Contact primary schools in Camden](#)
- [Term dates](#)

Applications are due: Thursday 31st October 2019

Please come and see SLT, Edina or any member of Yr 6 if you need any help.

School Budget

Comparatively, PH is doing ok financially. Other local schools are suffering.

We had a budget shortfall of £292k when setting the budget - affected by rising pension and operational costs, multiple maternity leaves, unfunded pay rises, general increase in expenditure and less than inflation income plus reduction in SEN funding.

Our key points:

- Strong pupil numbers - other local schools seeing falling roll*
- High SEN - both challenge & a strength*
- Reduce support staff*
- ARP - brings additional income and building benefits*
- Nurseries*
- Additional income through external work*
- Changes are inevitable - not replacing Art or French at present / reduction in cover teacher days, curriculum budgets, school journey, reduction in bought in therapy and general slicing of all budget cost centres.*

Important Information

PE

Wednesdays

Children must come to school in their P.E. kit.

TALK TO TEACHER

Fridays

3:15pm

LIBRARY DAY

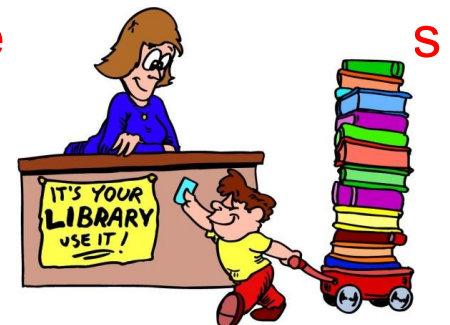
Kestrels - Mondays

Herons - Fridays

Children must bring a book bag or rucksack every day with their reading challenge book.

EXTRA PE - Thursday

Children need to bring either their PE kit or flexible leggings to school.



The Curriculum & How We Work

Topics

Geography: Rivers and the Water Cycle

History: WW2

STEAM (DT, Art, Technology, Maths) Project - Light and Shadows

Science: Light, Electricity, Animals including Humans, Interdependence and adaptation

Reading Challenge

CHALLENGING OURSELVES- GROWTH MINDSET!



- **The governments says Year 7 Learners are:**

Children who can read fluently and effortlessly and manage the general demands of the curriculum in year 7, across all subjects. They should be able to prepare readings, with appropriate intonation to show their understanding, and should be able to summarize and present a familiar story in their own words. They should be reading widely and frequently, outside as well as in school, for pleasure and information. They should be able to read silently, with good understanding, inferring the meanings of unfamiliar words, and then discuss what they have read.

WHAT WE WANT YOU TO DO...

- Read 20 books from the Year 6 Book List.
- They will have **buddies**, who are reading the same book, to help them.
- We will give the pupils time each week to discuss their book, using the **Reciprocal Reading** skills.
- They will have a **pack** with their book, post-its and skills card in it.
- Pupils will **sign a contract** to give to their parent to say they will challenge themselves to **achieve the challenge** and will **replace any book lost**.

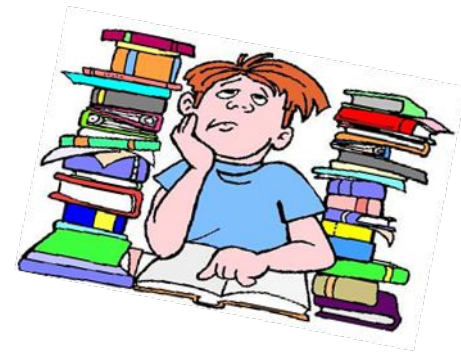


Predict	Read	Clarify	Ask Questions and Discuss	Sum up
				
I predict (title/ subheading/ chapter) will be about	Let's read to check the prediction/s and find out more.	Is there anything you need to clarify, such as tricky words, phrases or ideas?	What did we learn? What else are you wondering about? (Title/sub heading/ chapter) was about Would anyone like to add to my summary?

Weekly Timetable

	Monday	Tuesday	Wednesday	Thursday	Friday
	<u>Reading Challenge</u>	<u>Handwriting</u>	<u>Handwriting</u>	<u>SPaG</u>	<u>SPaG</u>
	<u>English</u>	<u>English</u>	<u>PE/Music</u>	<u>English</u>	<u>English</u>
9:00 – 10:15					
10:15 – 10:35	Assembly				Achievement Assembly
	10:35 – 10:50		PLAY		
10:55 – 12:00	<u>Maths</u>	<u>Maths</u>	<u>PE/Music</u>	<u>Maths</u>	<u>Maths</u>
12:00 – 12:30		Singing Assembly		Phase Assembly	
	12:30 – 1:30		LUNCH		
1:30 – 2:15	Guided Reading	Guided Reading	<u>Maths</u>	Guided Reading-	Guided Reading
2:15 – 3:25	Topic / library	Topic	Guided Reading	Yoga / Topic	Topic / library

Home Learning



- Home learning will be given out every Friday and expected to be returned on the following Wednesday.
- A hard copy will be given out with their Home learning books and it will be posted on Google Classroom. We urge you to encourage your children to engage in these activities.
- Each week your child will receive an activity related to:
 - Spelling/Word Knowledge
 - Maths fluency
 - Reading
 - Topic

Please note, some activities might be repeated to reinforce learning or because children will take longer to grasp concepts/facts.



SCHOOL JOURNEY

Croft Farm



THE ACCOMMODATION AT CROFT FARM

A family run activity centre, with unrivalled range of land-based and water-based activities.



- Amazing centre – look at their website: [JCA Croft Farm](#)
- Children stay in chalets (cabins) . Each room sleeps 4 children in bunk beds.
- All children's rooms are close to toilet and shower block
- Skilled and experienced centre staff are on hand to provide full support, including during evening activities.
- 12 acre lake, only chest deep, and easy access to the River Avon.
- Dedicated watersports centre, with an extensive water sports shop and function room. This equipment is all set for the junior market, with junior sized paddles and boats.
- Onsite Adventure Playground and Games Room.
- Safe and secure lakeside location, with 24 hour JCA staffing

WHEN ARE THE CHILDREN GOING?

We are going to take the children in the
Summer Term just after SATs:

Monday 22nd - Friday 26th June 2020



COSTS

The full cost of the journey is **£250.00**. This includes all transport, meals and accommodation.

We need a deposit of £50 by Friday 27th September 2019 to confirm your child's place.



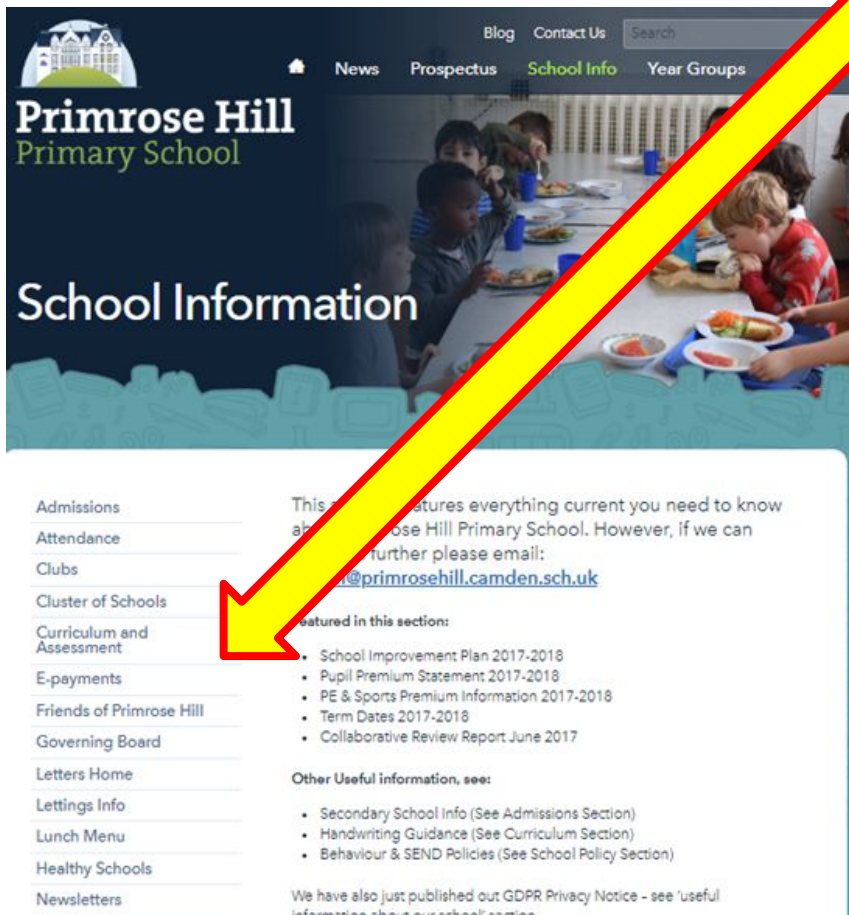
WHAT DO YOU NEED TO DO NOW?

- *If you have not paid a deposit, you need to pay **£50 by Friday day 27th September 2019**. We will only book for the number of children who have permission to go and have paid a deposit by this date.*
- We will have another meeting before the children go in June and will keep you posted with any new information throughout the year.
- Remember to keep paying weekly please. Please speak to the office if you need to know how much you still need to pay.



If you have any questions about payment, please arrange to meet Robin.

QUESTIONS?



- Please remember to refer to the school's website for:
 - Letters Home
 - Presentations
 - Dates on Calendar
 - Clubs Information
 - All Policies & Procedures