

*Primrose Hill
Primary School*

The Grove



*Final Information Update for
Parents & Carers*

*Autistic Resourced
Provision (ARP)*





The Grove



Autistic Resourced Provision (ARP) at Primrose Hill Primary School

General Information

The Grove, the new Autistic Resourced Provision at Primrose Hill Primary School opened in the Autumn Term 2019. We will, each year, admit two Reception aged children until 2025 meaning a total of 14 extra children.

All children are a member of Ladybird Reception Class and will therefore benefit from the skilled and experienced teaching and support, the beautiful new classroom and outside environment, but also new specialised provision around the school which is newly constructed as part of the project. When the children move into Y1, they will be allocated into one of the classes – Butterflies and Dragonflies – and so on – and we begin the process again.

Our new facilities include two new ARP Classrooms - **Maple & Sycamore** Classes - on the top floor alongside satellite provisions across the school. The project, funded by Camden, has allowed us to expand and renovate other areas in the school including the playground and children's toilets.



The children's day will start slightly later at 9:30 and finish slightly earlier at 3:00. This will ensure their day starts calmly and quietly when all of the usual traffic has finished.

Staffing

The provision will be overseen and managed by **Syra Sowe**, who is the Assistant Head Teacher and Inclusion Manager.

We will also have a Lead Teacher and associated support staff.

Our staff structure is as follows:



Our superb ARP Staff Team will also provide support to our other ASD children across the school both within their classrooms and within the provision itself. There will be training available for the Lead Teacher and Support Assistants as well as opportunity to visit other settings.

In the Summer Term, Hannah Wright will return as the new SENDCo who will support Syra's work with Inclusion across the school.

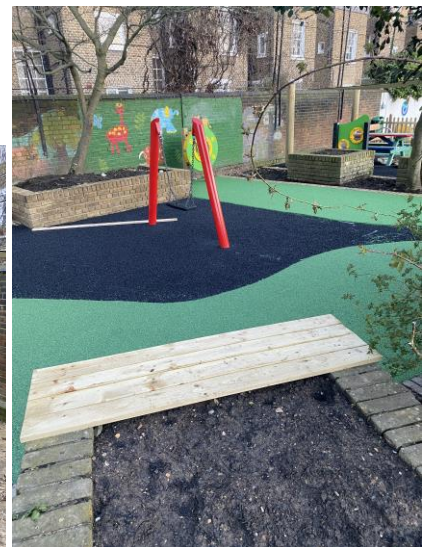
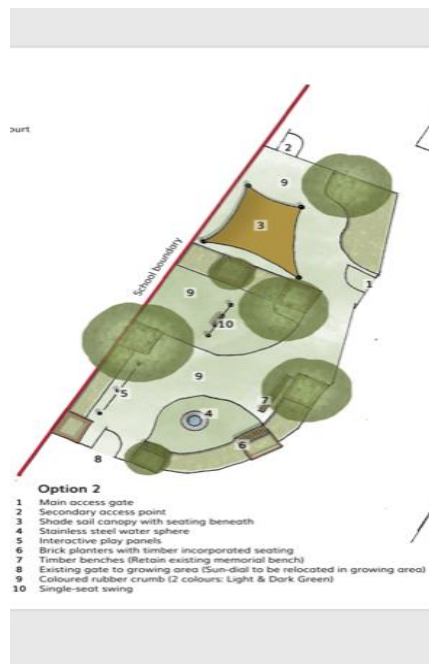


The Project

External

ARP Specific Play Area

Including a swing, water feature, activity equipment, shaded covered area and seating



Lower Ground Floor

Saplings Learning Room - Early Years Group Room & Washing Facilities

New Early Years Guided Reading Room



Group Floor

Oak Learning Room – Key Stage I Group Room
Washing Facilities & Dining Space



First Floor

Chestnut - Additional Group Room,
Washing Facilities



Top Floor

Birch - Therapy & Group Room

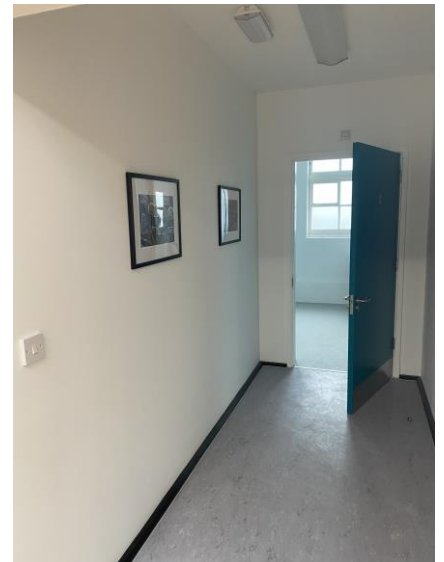
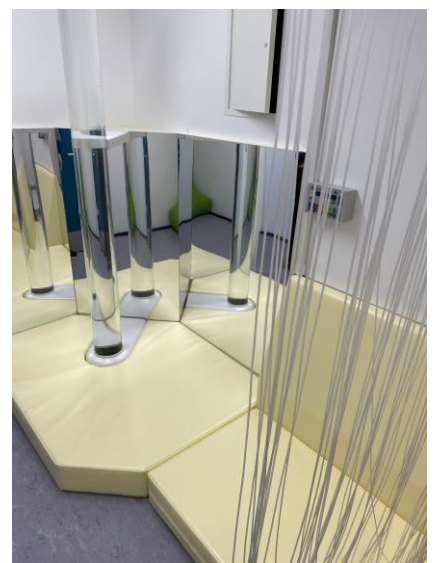
Maple - ARP Base 1

Sycamore - ARP Base 2

Calm Room

Soft Play, Sensory Room

The Cabin – multi-gym.





Our Ethos

The work undertaken by the ARP professionals will be alongside our other provision.

Our ARP children will always be part of the general class provision, but have the opportunity to withdraw and undertake appropriate interventions and activities in bespoke spaces around the school which will develop their learning. This includes spending time in smaller learning rooms, in a calm space, or the soft play or sensory rooms which will be built on the top floor.

Each of the specific ARP classrooms will have a range of equipment including cooking facilities which will be used creatively to provide a very broad and balanced curriculum experience linked to what their peers will be learning in class. It is an exciting time to be developing this work at Primrose Hill.

The Grove

