

# Primrose Hill Primary School

## Third Letter - School Opening Year Group Information Sheet

Dear Parents & Carers

Further to my letter sent earlier in the week, here is an update as a reminder with some group amendments if you have let us know if your child is returning:

### Learning at School

**Ladybirds Group 1 & 2, Butterflies & Kestrels** will learn in school on a Monday and Tuesday. Their learning continues online on a Thursday and Friday.

**Ladybirds Group 3 & 4, Dragonflies & Herons** will learn in school on a Thursday and Friday. Their learning continues online on a Monday and Tuesday.

Each Day - Vulnerable Children Group & Key Worker Children in School

Wednesday - **no** school apart from key worker and vulnerable group children. This will be an 'offline' day with activities provided.

### Class Groups

Ladybirds adults will be Kyri, Maria, Fitore, Dita, Tanya, Gona, Heather and Amal.

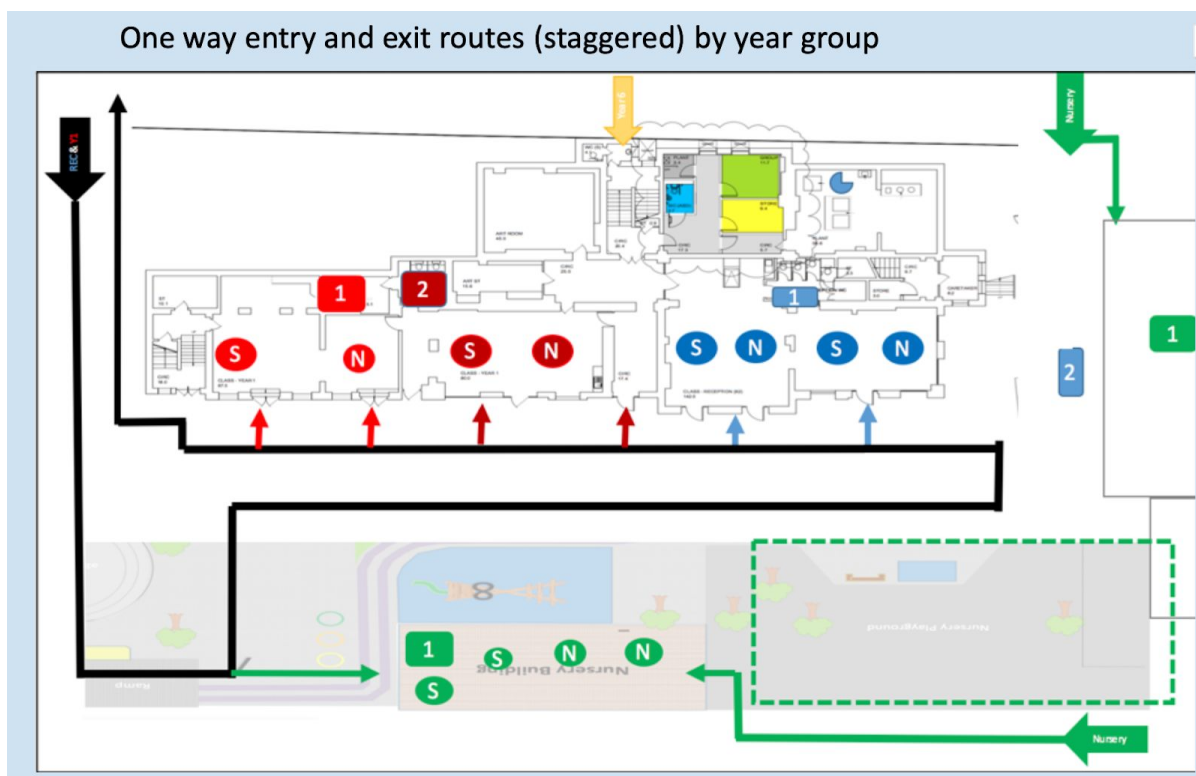
Monday & Tuesday		Thursday & Friday	
Ladybirds 1	Ladybirds 2	Ladybirds 3	Ladybirds 4
Husna Mikko Dean Elisa Layla Khadra	Salma Iqra Grace Albert Bodhi Ahmed	Naiara Betsy Lylah Felix Georgie Hugo	Mann Elliott Ayman Ida
<b>In School Key Worker Group</b> Adam Maisie Megan Beau			

## Week Beginning 8th June

Mon 8th	Tues 9th	Weds 10th	Thurs	Fri
Ladybirds Group 1 Ladybirds Group 2  Ladybirds 3 & 4 Online  Vulnerable Group & Key Worker Children	Ladybirds Group 1 Ladybirds Group 2  Ladybirds 3 & 4 Online  Vulnerable Group & Key Worker Children	Wellbeing & Offline Activities For All Children except  Vulnerable Group & Key Worker Children  School Deep Clean	Ladybirds Group 3 Ladybirds Group 4  Ladybirds 1 & 2 Online  Vulnerable Group & Key Worker Children	Ladybirds Group 3 Ladybirds Group 4  Ladybirds 1 & 2 Online  Vulnerable Group & Key Worker Children
Butterflies In  Dragonflies Online	Butterflies In  Dragonflies Online		Dragonflies In  Butterflies Online	Dragonflies In  Butterflies Online
Kestrels In  Herons Online	Kestrels In  Herons Online		Herons In  Kestrels Online	Herons In  Kestrels Online

## These are the specific times for your year group

	Entry Gate	Entry Time	Exit Time
Ladybirds	<ul style="list-style-type: none"> <li>Main Gate</li> <li>Outside Class Gate 1 or 2</li> </ul>	Groups 1 & 3 8:45 Groups 2 & 4 8:50	3:05
Year 1	<ul style="list-style-type: none"> <li>Main Gate</li> <li>Outside Class Gate 1 or 2</li> </ul>	Group 1 9:10 Group 2 9:15	Group 1 3:15 Group 2 3:20
Year 6	<ul style="list-style-type: none"> <li>Main Gate if siblings</li> <li>New Scooter Gate</li> </ul>	Group 1 9:25 Group 2 9:30	Group 1 3:30 Group 2 3:35



NB: If you have NOT let us know or decided whether to send your child back to school, you will NOT be able to start on 8th June as we have planned the class groups and pods around this information. You will need to give us ONE WEEK'S notice in order for us to plan safely for this.

I look forward to seeing many of you on Monday 8th June.

**Robin**