

# Primrose Hill Primary School

## School Opening Year Group Information Sheet - Froglets Nursery

Dear Parents & Carers

This is a summary of the arrangements for the return to school plan. This information is for parents & carers of children who will be learning A) In School and B) At home online.

**Please read this information carefully.**

As you know we are beginning the school re-opening with Reception, Y1 and Y6 from Monday 8th June. **Those Froglets who have let us know they would like to return to school will do so on **Monday 15th June**.** We will not be re-admitting Tadpoles at this time.

### Learning at School

**Froglets Group 1 & 2, Ladybirds Group 1 & 2, Butterflies & Kestrels** will learn in school on a Monday and Tuesday. Their learning continues online on a Thursday and Friday.

**Froglets Group 3 & 4, Ladybirds Group 3 & 4, Dragonflies & Herons** will learn in school on a Thursday and Friday. Their learning continues online on a Monday and Tuesday.

Each Day - Vulnerable Children Group & Key Worker Children in School

Wednesday - **no** school apart from key worker and vulnerable group children. This will be an 'offline' day with activities provided.

### Week beginning 15th June

Mon 8th	Tues 9th	Weds 10th	Thurs	Fri
Froglets Group 1 Froglets Group 2  Froglets 3 & 4 Online	Froglets Group 1 Froglets Group 2  Froglets 3 & 4 Online	Wellbeing & Offline Activities For All Children except  Vulnerable Group & Key Worker Children  School Deep Clean	Froglets Group 3 Froglets Group 4  Froglets 1 & 2 Online	Froglets Group 3 Froglets Group 4  Froglets 1 & 2 Online
Ladybirds Group 1 Ladybirds Group 2  Ladybirds 3 & 4 Online  Vulnerable Group & Key Worker Children	Ladybirds Group 1 Ladybirds Group 2  Ladybirds 3 & 4 Online  Vulnerable Group & Key Worker Children		Ladybirds Group 3 Ladybirds Group 4  Ladybirds 1 & 2 Online  Vulnerable Group & Key Worker Children	Ladybirds Group 3 Ladybirds Group 4  Ladybirds 1 & 2 Online  Vulnerable Group & Key Worker Children
Butterflies In  Dragonflies Online	Butterflies In  Dragonflies Online		Dragonflies In  Butterflies Online	Dragonflies In  Butterflies Online
Kestrels In  Herons Online	Kestrels In  Herons Online		Herons In  Kestrels Online	Herons In  Kestrels Online

This pattern will continue until the end of term or until Government guidance changes.

Note, as the school finishes on a Tuesday, the nursery groups will have their finish days the week before.

E.g. Froglets 1 and 2 Last Day in School Tuesday 14th July - online work continues until 17th July  
 Froglets 3 and 4 Last Day in School Friday 17th July

### Class Groups

The nursery children have been divided into four groups and will work across different areas in the Nursery and if necessary, will use the Tadpoles space.

Monday & Tuesday		Thursday & Friday	
Froglets 1	Froglets 2	Froglets 3	Froglets 4
Liz	Lia	Chin	Abu
Luart Logan Millie Pierre Ria Isaac	Katie Antoine Luis Cora Adam	Chloe Leo Eden Erina Erno	Elijah Giv Matilde Joseph Otilie

### Orientation

The first week back for the Froglets will be about orientation for each group. This is to teach the children about new routines and expectations for their time in school. We will go over the following areas:

- Class groupings, learning pods and room organisation
- Zones of distancing at school
- How to enter & exit the building
- Transitions within the building and playground, although Nursery will remain mostly in their own area.
- Playtime and lunchtimes
- Toilets, Hygiene and sanitation protocol
- First aid

### These are the specific times for your year group

	Entry Gate	Entry Time	Exit Time
<b>Froglets Group 1 &amp; 3</b>	<ul style="list-style-type: none"> <li>● Main Gate if siblings</li> <li>● Two Year Old Entrance</li> </ul>	Groups 1 & 3 8:55	3:00
<b>Froglets Group 2 &amp; 4</b>	<ul style="list-style-type: none"> <li>● Main Gate if siblings</li> <li>● New Canal Gate</li> </ul>	Groups 2 & 4 8:50	3:00
<b>Ladybirds</b>	<ul style="list-style-type: none"> <li>● Main Gate</li> <li>● Outside Class Gate 1 or 2</li> </ul>	Groups 1 & 3 8:45 Groups 2 & 4 8:50	3:05
<b>Year 1</b>	<ul style="list-style-type: none"> <li>● Main Gate</li> <li>● Outside Class Gate 1 or 2</li> </ul>	Group 1 9:10 Group 2 9:15	Group 1 3:15 Group 2 3:20
<b>Year 6</b>	<ul style="list-style-type: none"> <li>● Main Gate if siblings</li> <li>● New Scooter Gate</li> </ul>	Group 1 9:25 Group 2 9:30	Group 1 3:30 Group 2 3:35

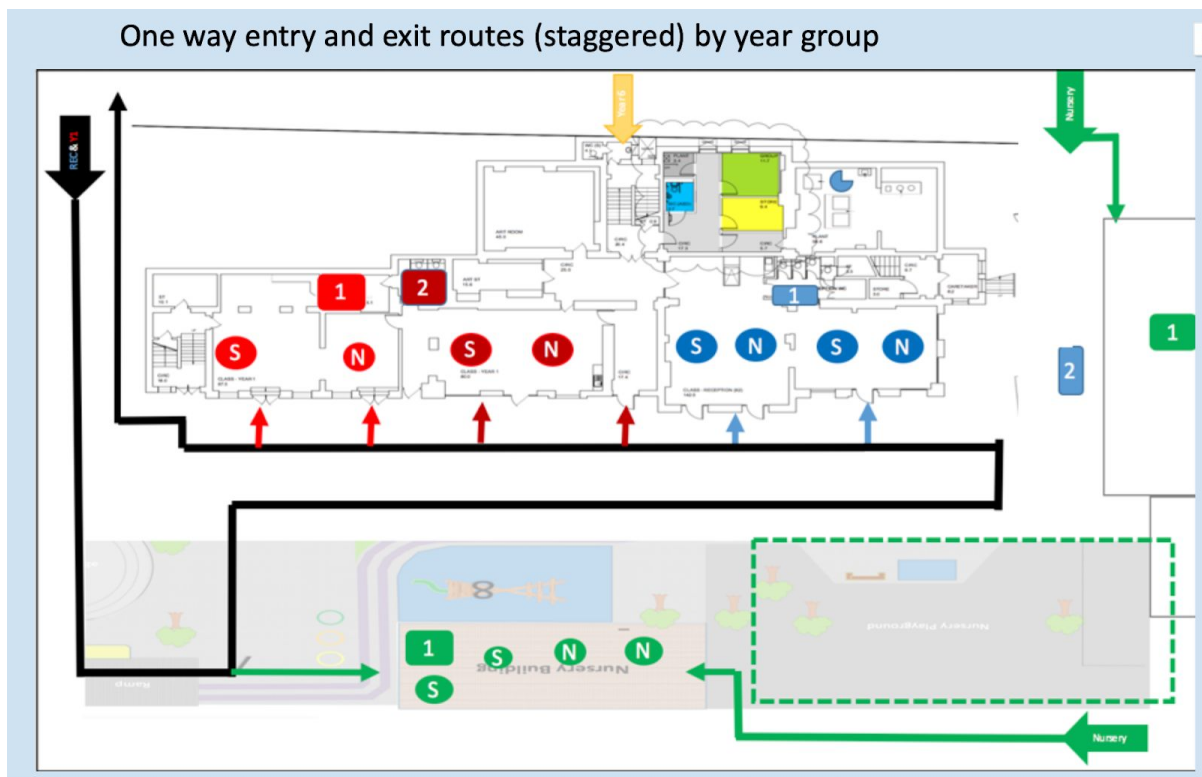
## Information about dropping off & collecting your child

Each year group has a designated entry & exit area and time. The diagram on the next page shows this:

- Nursery using the Two Year Old Gate or newly opened Canal Gate and/or main entrance if you have siblings.
- Reception and Y1 use the Main entrance following the one way system as illustrated and using your set outside classroom gate depending on which group you are in.
- Y6 use the newly opened scooter gate and up Staircase 2.

### Etiquette

- You must use hand sanitiser on entry and exit.
- Parents & carers are not to enter the building apart from the lobby, We can only have 3 parents & carers in the main lobby at any one time. During busier times, we ask you to wait outside on the designated 2m markers.
- If your child has an appointment or if you need to collect your child earlier, you should go to the office. A tannoy sent for a child to come down to reception or be collected by a member of staff and taken to their parent outside the school – no physical contact.
- *The Scooter Gate will now be an entrance for Y6, so we would prefer you **not** to leave scooters or bikes at school for the time being.*



### Other Key Information

- ❑ End of day collection: Parents/ carers to collect children from upper/ lower playground only.
- ❑ If it is raining the collection protocol does NOT change and parents/ carers must wait for children outside.
- ❑ Camden Council are also planning to remove the pedestrian barrier along the Princess Road entrance to allow more movement. The plans also include closing Princess Road and Chalcot Road to cars between 8:30 - 9:30 and 3:00 - 4:00pm (TBC). Please abide 2m distancing if you are queuing to get into school.

## Important Information Before Returning to School

Please check your child for symptoms, and **do not** come in to school if they show the following symptoms:

- a high temperature (please try to take their temperature every morning)
- a new, continuous cough – this means coughing a lot, for more than an hour, or 3 or more coughing episodes in 24 hours
- a loss or change to sense of smell or taste – this means they cannot smell or taste anything, or things smell or taste different to normal

Please make sure your child has not brought in

- any toys in to school
- any personal sanitation such as tissues - we are well stocked at every point!
- no need to bring in a book bag. We have additional bags to send stuff home in.
- not brought any PPE into school as this is against gov't guidance, which is that PPE can increase the risk when used by a child

Only Bring in

- A packed lunch box
- A named water bottle which needs to go home each day to be washed - there will be no water fountains so a bottle is essential
- A carrier bag which contains some spare clothes in case of an accident.

Please ensure your child is dressed appropriately for the day ahead, e.g.

- wears clothing that they can easily do up and manage themselves
- does not wear multiple layers
- has only labelled clothes on (we cannot store spare clothes so will have to throw them if unlabelled)

Please wash your hands before leaving the house

Please apply sun lotion to your child before school. We will not be able to do this.

Please avoid public transport or any crowds or close contact.

Children can continue to have school dinners or bring packed lunch if they choose.

## What happens if someone has symptoms of COVID-19 in school, at nursery or at home?

1. If your child or any member of your household has a temperature or a new, continuous cough, or loss of/change to their sense of taste or smell, please let your school know, and keep your child and the rest of your household at home.
2. If a child or member of staff gets these symptoms in school, they will be sent home with advice about what to do.
3. Anyone with symptoms needs to stay at home for 7 days, or longer if they are still unwell. Members of their household also need to stay home, for 14 days. If these other family members become ill, they need to begin a 7-day self-isolation period from the day their symptoms start.
4. Pupils, staff and household members should be tested for COVID-19, if they develop symptoms. The test should be arranged as soon as possible. See [www.nhs.uk/coronavirus](http://www.nhs.uk/coronavirus) for advice on testing.

5. If the test is negative, the child and their household can leave self-isolation and return to school.
6. If a child or member of staff tests positive, only then will the rest of their small class group need to be sent home to self-isolate for 14 days. The households of these other children do not need to isolate, unless their child also develops symptoms.

### **Clinically Vulnerable or Extremely Clinically Vulnerable**

Some of you will have confirmed on the previous survey that you are taking up a school place & that your child, or someone that they live with, is in the **clinically vulnerable** or the **extremely clinically vulnerable** group.

If your child is **extremely clinically vulnerable**, they are advised to remain at home until Government advice changes.

If your child is **clinically vulnerable**, or lives with someone who is extremely clinically vulnerable, government advice is that you *seek the opinion from a GP or a medical professional* before your child starts school. If your child is in any of these groups and you have confirmed they are taking up a place, please expect a phone call early next week to confirm that our information is up to date.

**NB: If you have NOT let us know or decided whether to send your child back to school, you will NOT be able to start on 15th June as we have planned the class groups and pods around this information. You will need to give us ONE WEEK'S notice in order for us to plan safely for this.**

I realise this is a lot of information but hopefully it makes sense of the huge amounts of logistics and information for you. It has been for us too!

We'll be on hand to help you through it and I'm happy for you to ask me any questions in the meantime.

I will see many of you on Monday 15th June.

**Robin Warren**

Head Teacher

Primrose Hill Primary School

