

# Primrose Hill Primary School Weekly Newsletter



Friday 29th Nov.  
Issue No. 12  
(2019-2020) @PrimroseHillRW



Twitter

**Address: Princess Road, London, NW1 8JL**

**Email: admin@primrosehill.camden.sch.uk**

**Tel : 020 7722 8500**

**Website: www.primrosehill.camden.sch.uk**

We are soon to be entering December where there will be a culmination of fun end of term events. There's always lots going on, but the next few weeks are super busy as always. Make sure the children have layers of clothes - we've noticed quite a few children playing outside in thin coats on cold and windy days and then coming inside to a warm building...this leads to some colds and sniffles. We are continuing to promote good attendance and may have discussed this with you individually during your consultations meeting. **Robin**

## Parent Consultations

There was a positive feel around the school on Wednesday; encouraging to be able to share your children's achievements and learning and next steps with you. Attendance at these meetings was good, but if you missed the opportunity to speak to your child's classroom teacher for any reason, please make an appointment if you can.



## Reverse Advent Calendar



## Reverse Advent Calendar

Last year we had a Reverse Advent Calendar where we put an empty box in the lobby and asked you to donate food items which we distributed to local needy sources. We did an amazing job but the holidays are a trying time for some families and we would like to help in any way we can. The box will be in the lobby from Monday so please donate what you can for a good cause.

## Attendance

100% Day was a success!

7 classes with 100% attendance BRILLIANT. Well done to those classes and I hope you all enjoy your extra play time. Our attendance for that day was 96.85%! We'll be having another 100% in the new term, so keep an eye out for dates and prizes.

The countdown begins for the end of term prizes and it is super close (0.01% difference between Grasshoppers and Butterflies!).

Here is the leader board so far:

1. WOODPECKERS
2. GRASSHOPPERS
3. BUTTERFLIES
4. BEETLES
5. BATS
6. DRAGONFLIES
7. KESTRELS

8. HEDGEHOGS
9. HERONS

10. SQUIRRELS
11. FOXES
12. BLACKBIRDS



There are 3 weeks left of the term so keep at it, Pizza Express awaits!

## Christmas!

**Tuesday 3rd December  
Carol Concert at St Marks 6pm**

**Tuesday 10th & Thurs 12th December  
EYFS Christmas Show 2:30pm  
Cecil Sharp House Concerts**

This year's end of term concerts will be performed at Cecil Sharp House. We will be singing winter songs and enjoying street dance performances.

The KS1 (Years 1 and 2) will be performing on  
**Thursday 5th December at 2:30 pm**  
The KS2 will be performing twice on  
**Wednesday 11th December:**

- Concert for years 3 and 5 parents will start at 1.15pm
- Concert for years 4 and 6 parents will start at 2.30pm

Each family is allocated two tickets

Tickets cost £3.50 per ticket which will go towards paying the cost of the venue. Tania and Amal will be selling tickets for both KS1 and KS2 performances in the foyer on Monday 2nd December from 8:00-9:15 am and 3:15-3:45 pm. We are limited to a 2 ticket limit.



## Wednesday 18th December Christmas Lunch

The Christmas Lunch for children will be served on 18th December 2019. If your child normally has packed lunch but would like a Christmas lunch, please make sure you order one. The price of the lunch is £2.13 and you can also find the Christmas Menu on our [school website](#). If your child is eligible for Free School Meals you won't need to pay, but if your child is normally packed lunch and would like a Christmas Lunch then all you need to do is fill in the slip and hand it to the office by **6th December 2019**. If your child normally takes up school dinners, they will automatically have the Christmas Lunch.

## Use of playground equipment before and after school

A gentle reminder to parents that the equipment in the playground should only be used during school hours with staff supervision. We understand that the equipment is very appealing to children but afterschool clubs takeover from 3:45 so we ask that you vacate the premises by 3:45. Thank you for understanding.

# Primrose Hill Primary School



## Term Dates 2020 - 2021

### Autumn Term 2020

Thursday 03 September to Friday 23 October 2020 (37 days)

*Half-term: Monday 26 October to Friday 30 October 2020*

Monday 02 November – Friday 18 December 2020 (35 days)

*Christmas break: Mon 21 December 2020 to Friday 1 January 2021*

### Spring Term 2021

Tuesday 05 January to Friday 12 February 2021 (29 days)

*Half-term: Monday 15 February to Friday 19 February 2021*

Monday 22 February to Wednesday 31 March 2021 (28 days)

**Easter / Spring holiday:** Thursday 1 April to Friday 16 April 2021 (Including Good Friday, 2 April, and Easter Monday, 5 April)

### Summer Term 2021

Tuesday 20th April to Friday 28 May 2021 (28 days)

Early May Bank Holiday Day Monday 3<sup>rd</sup> May & Spring Bank Holiday Monday 31<sup>st</sup> May 2021

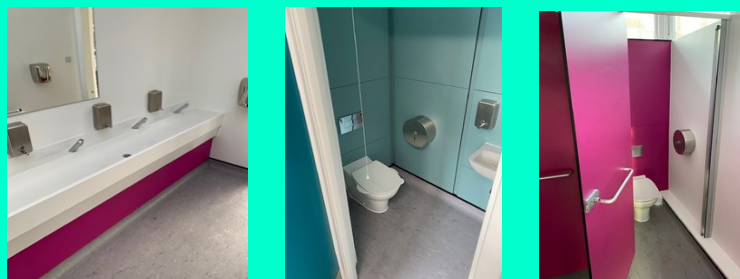
*Half-term including Spring Bank Holiday, Monday 31 May to Friday 4 June 2021*

Tuesday 08 June to Thursday 22 July 2021 (33 days)

### INSET DAYS

Tuesday 1<sup>st</sup> September 2020  
 Wednesday 2<sup>nd</sup> September 2020  
 Monday 4<sup>th</sup> January 2021  
 Monday 19<sup>th</sup> April 2021  
 Monday 7<sup>th</sup> June 2021

**New Facilities** – We hope you had had a chance to look at the new toilets on the ground floor.



### Side Gate

The side gate to the Tadpoles and down into the playground **MUST** be kept shut please. This entrance should only be used by Breakfast Club, After School Club and those parents and carers who use the Tadpoles. For entry to the Froglets, you should use the main school entrance by the drive. Please be mindful of shutting the gates behind you.



### Key Dates

Thurs 5th Dec	PM - Key Stage 1 Concert at Cecil Sharp
Tue 10th Dec	2:30– EYFS Christmas Show
Wed 11th Dec	1:15 & 2:30 – Key Stage 2 Concert at Cecil Sharp (two performances)
Thurs 12th Dec	2:30 –EYFS Christmas Show
Wed 18th Dec	Christmas Lunch
Thurs 19th Dec	LAST DAY OF TERM—1:30 Finish
Mon 6 <sup>th</sup> Jan	INSET DAY
Tues 7 <sup>th</sup> Jan	First Day Spring Term
	<b>Mon 17<sup>th</sup> to Fri 21<sup>st</sup> Feb Half Term</b>
Fri 3 <sup>rd</sup> April	Last Day of Spring Term
Mon 20 <sup>th</sup> April	INSET DAY
Tues 21 <sup>st</sup> April	First Day of Summer Term
Fri 8 <sup>th</sup> May	MAY DAY
	<b>Mon 25<sup>th</sup> to Fri 29<sup>th</sup> May Half Term</b>
Mon 1 <sup>st</sup> June	INSET DAY
Tues 21 <sup>st</sup> July	Last Day of Summer Term

### Stars of the week

★ Dragonflies – Ajana & Joshua	★
★ Butterflies – Klara & Toby	★
★ Grasshoppers – Jordan & Reiam	★
★ Beetles – Emilia & Tayyiba	★
★ Bats – Henry & Hiwaad	★
★ Squirrels – Noah and Adam	★
★ Hedgehogs – Kalan and Rukan	★
★ Foxes – Leo and Alaina	★
★ Blackbirds – Salome & Isabella	★
★ Woodpeckers – Lucas & Star	★
★ Herons – Tobi & James	★
★ Kestrels – Jonathan & Helena	★

### Friends Of Primrose Hill School

Due to the on going building works, FOPHS will unfortunately not be having a festive fair this year. However, there will be plenty of school Christmas concerts to look forward to. Once the building work is complete we will be looking forward to the sponsored bounce, Pancake day and our amazing summer fair, so lots to come soon.

Thank you for all your continued support. **Amal on behalf of FOPHS.**