

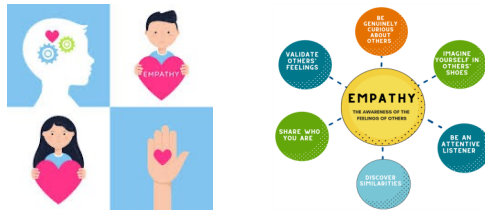
# Primrose Hill Primary School Weekly Newsletter

Address: Princess Road, London, NW1 8JL  
Tel : 020 7722 8500  
Email: [admin@primrosehill.camden.sch.uk](mailto:admin@primrosehill.camden.sch.uk)  
Website: [www.primrosehill.camden.sch.uk](http://www.primrosehill.camden.sch.uk)

Friday 3rd Feb.  
Issue No. 19  
(2022-2023)



Dear Primrose Hill Families,  
A value is a principle that guides our thinking and behaviour.



Throughout February we are exploring the value **EMPATHY**  
What will empathy do for my child? **CREATE STRONG SOCIAL NETWORKS.**  
Empathy means..... I

- put ourselves in other people's shoes and understand how they feel
- listen and help others to work through their problems.
- say kind words and show respect
- check if someone is ok if they look hurt or sad
- smile at people to make them happy
- not judge others and listen to their opinion

"If you can't see eye to eye let's try heart to heart"

It is a key ingredient to successful relationships with our friends and family. High levels of empathy result in lower levels of conflict, better problem solving. It also helps us make new friends, keep the ones we have and build a stronger social network. Having a strong social network helps us live longer and is one of the best predictors of our health and happiness.

## EMPATHY TIP

**Help your child recognize and label their own feelings.**

Understanding what you are feeling in each situation helps children learn to empathise. When we ignore or suppress feelings it's difficult to understand them in others. At home, make sure your child understands that all their feelings are okay, including sadness, anger, frustration and how to recognise those feelings. Help them give these feelings a label. Then set clear boundaries about what is and isn't okay to do with the feelings. For example, its normal to feel angry at a sibling but not okay to hit them as a result. This simple step helps children learn to calm themselves, cope better with life's ups and downs and empathise with others.

### At home:

- Talk with your child about how we can show empathy to one another.
- Talk about how we show empathy in the wider world.
- Talk with your family about ways that family members show empathy and how charities promote empathy

I hope that together we will be able to create empathy and foster community all around us.

# magic breakfast fuel for learning

**Free Bagel Breakfast as we partner with Magic Breakfast.**

After half term we will be providing bagel in the morning for everyone. Every child is welcome to a smile and a bagel.

Do you know how Free School Meals began?

In 1906 Margaret McMillan famously said, "Feed the stomach, then the mind". At Magic Breakfast we wholeheartedly support this, but unfortunately this ideology is not mirrored by the rest of society.

Over 100 years since the first School Meal Act was passed, children and young people are still going hungry, especially now as parents increasingly struggle to afford their energy bills and food prices are continuing to rise.



After half term we are looking for parent volunteers to support us with toasting and buttering the bagels. Children will be able to collect a bagel from the playground, on a rainy day from the main foyer and we will send them to the other classes. We hope that this will mean that your child will be calm, focussed and this will make a massive difference on learning because the children will be all fed and ready to learn. I hope we can continue to strengthen the bond we have with our children and families.

## Parent Consultations - Thursday 23rd February

We will have our Face2Face Parent Consultations on **Thursday 23rd February 2023 from 1:00—6:00 PM**

The school will be closed from 1:00pm for all children apart for Tadpoles which will remain open as normal.

If you have changed your mobile phone number recently and have not yet informed us, please let us know.



## Nursery Admissions for September 2023

If you or someone you know has a child born between **1st Sept 2019 and 31st Aug 2020**, they are eligible for a space in our **3-4 year olds' Nursery, Froglets!**

Applications can be found on our website: <https://www.primrosehill.camden.sch.uk/%20school-information/admissions/>

The deadline to apply is **15th February 2023** or you can email Tara on [dmissions@primrosehill.camden.sch.uk](mailto:dmissions@primrosehill.camden.sch.uk) for more information.



## World Book Day

World Book Day  
**Friday 3rd March**

Which character will you dress up as for the parade?

Prizes for the best homemade costumes and a book fair in the playground after school too. Start planning now! Your character must be from a book.

More info to follow soon.



**A** is for attendance  
Our whole school  
target is **96%**

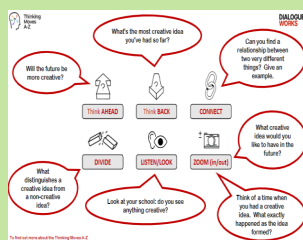
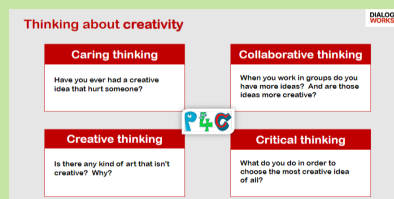
This week's attendance is **93.20%** and our lates are a disappointing **102**. Well done to **Woodpeckers** who managed **97%**. One of the most important ways in which you can support us and your children in 2023 (and beyond) is to ensure that your children attend school every day. Attendance in school is of paramount importance - any absence can have a profoundly negative impact on your child's learning as important aspects of a sequence of work can be missed.

*Every day*  
**COUNTS!**

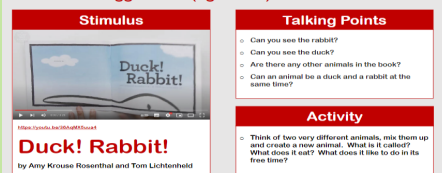
School success starts  
with attendance



## Harsha's Home Talk Activity



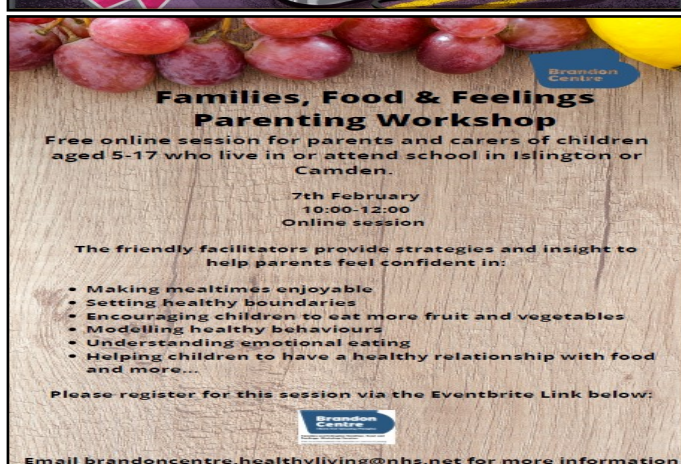
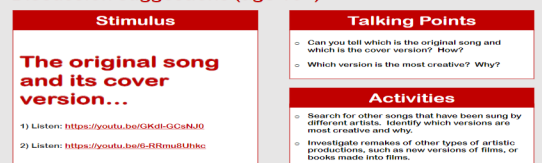
### Discussion suggestions (age 3 - 5)



### Discussion suggestions (age 6 - 9)



### Discussion suggestions (age 10+)



## Artists, designers, craft makers and architects

We are looking for these creative people amongst our Primrose Hill community.

If you have any of these skills and would be happy to give some time to share them with the children in our school

Please contact

Maria Felstead Art and Design lead

via the office

[admin@primrosehill.camden.sch.uk](mailto:admin@primrosehill.camden.sch.uk)

**Half term holiday, why not visit the Tate Modern and Tate Britain for creative family activities**

<https://www.tate.org.uk/visit/families-at-tate>

<https://www.tate.org.uk/whats-on/tate-britain/story-space/story-space-family-day>

## New Intercom System

There is new intercom system for everyone who needs to come into the office. Please be patient for the buzzer to be answered from a member of the office team and give them a reason for coming into school. You will be let in **only** if you have to talk to the office team and you will be asked to wait outside once you finished!

Also, the main gates will be open at **8:45 - 9:00am and at 3:30 - 3:45pm**. Please wait in front of the gates to collect your child.  
**Please respect our Office staff!**

## New Signing in System

**The school gate is open between 8.45 and 9am.** If you are late, you now need to sign your own child into school using the computer system in the main entrance. This will register your child and indicate they are late. You will need to provide a reason. Please ensure you arrive to school on time to prevent you being further delayed by having to wait in a queue to sign your child into school.

## You are a star!

We are so proud of each and every one of you!  
A big special mention for these children this week.  
Well done!

**EYFS Star Learners**

**The Grove:** Adal & Viola

**N:** Tadpoles Hannah & Emilia

**N:** Froglets Ketevan and Rawdah

**R:** Ladybirds - Defne and Emanu

## You are a star!

We are so proud of each and every one of you!  
A big special mention for these children this week.  
Well done!

**Y1 and Y2 Star Learners**

**Y1:** Dragonflies Neo and Aaliyah

**Y1:** Butterflies Haru and Mati

**Y2:** Grasshoppers - Millie and Nevo

**Y2:** Beetles - Oskar & Matilde

## You are a star!

We are so proud of each and every one of you!  
A big special mention for these children this week.  
Well done!

**Y3 and Y4 Star Learners**

**Y3 Squirrels:** ALL

**Y3 Bats:** Albi and Abdulrahman

**Y4 Hedgehogs:** Lottie & Sasha

**Y4 Foxes:** ALL

## You are a star!

We are so proud of each and every one of you!  
A big special mention for these children this week.  
Well done!

**Y5 and Y6 Star Learners**

**Y5 Blackbirds:** ALL

**Y5 Woodpeckers:** ALL

**Y6 Kestrels:** Charles & Eron

**Y6 Herons:** ALL

## You are a star!

**EYFS**

**WHAT LUCKY LADYBIRDS!**  
Did you know we have a cupcake shop in our classroom. Year 3 found out and kindly wrote letters to our local cupcake shop 'Primrose Hill Bakery' to ask if we could come and visit. Guess what, they said yes so off we went. We met the owner, the chef and the lady who takes the orders. We were even lucky enough to get a little cupcake, thanks Primrose Hill Bakery.












## You are a star!

**The Grove**

The children have been exploring how to make addition sentences. They have been working systematically to find number bonds to 10 and 20. Well done everyone!

## You are a star!

**Y1**

Year 1 have got off to a fantastic start with their Eco-Cities! So far, we have made recycling centres, trees and houses (with solar panels on the roof!)












## You are a star!

**Year 4**

On Thursday, Nigel from Purple Mash came to visit and showed us how to make our own 'Choose your own adventure' books using buttons with the 2Do: 2Create a Story program.

Upcoming Dates for your Diary:	
Friday 20th January: 9am in school 4pm virtually	End of Key Stage 2 SATs Information Session for Year 6 parents & carers
Friday 20th January	Chinese New Year
Tuesday 7th February	Safer Internet Day
Friday 10th February	Women in Science Day
Mon to Fri 13th to 17th February	<b>HALF TERM - school closed</b>
Mon 20th to Fri 24th February	Science Week
Thursday 23rd February from 1pm	Parents' Consultation
Thursday 2nd March	World Book Day
Mon 13th to Fri 17th March	Careers Week
Tuesday 21st March	World Poetry Day
Fri 24th March	Earth Hour Day
Fri 31st March	<b>Last day of Spring Term with Summer Term beginning for the children on Tuesday 18th April</b>

## Primrose Hill Primary School

### Term Dates 2023 - 2024

**Autumn term 2023**

**Wednesday 6 September to Friday 20 October 2023**      **33 days**

*Half-term: Monday 23 October to Friday 27 October 2023*

**Monday 30 October – Thursday 21 December 2023**      **29 Days**

**Christmas break: Thursday 21 December 2023 to Friday 5 January 2024**

**Spring Term 2024**

**Tuesday 9 January to Friday 9 February 2024**      **24 days**

*Half-term: Monday 12 February to Friday 16 February 2024*

**Monday 19 February to Thursday 28 March 2024**      **29 days**

**Easter/spring holiday: Friday 29 March to Friday 12 April 2024 (Easter weekend 29 March – 1 April).**

**Summer term 2024**

**Monday 15 April 2024 to Friday 24 May 2024**      **29 days**

*Bank Holiday: Monday 6 May 2024*

*Half-term: Monday 27 May to Monday 5 May 2024 (including Spring Bank Holiday, 27 May):*

**Tuesday 4 June to Wednesday 24 July 2024**

*Last day of term school finishes at 1:30pm*

**INSET DAYS**

Monday 4 September 2023  
Tuesday 5 September 2023  
Monday 8 January 2024  
Tuesday 9 January 2024  
Monday 3 June 2024