

Primrose Hill Primary School Weekly Newsletter

Address: Princess Road, London, NW1 8JL
Tel : 020 7722 8500
Email: admin@primrosehill.camden.sch.uk
Website: www.primrosehill.camden.sch.uk

Fri 9th June
Issue No. 31
(2022-2023)

Twitter 
[@NW1PrimroseHill](https://twitter.com/NW1PrimroseHill)

 [@primrosehillprimaryschool](https://www.instagram.com/primrosehillprimaryschool)



Dear Primrose Hill Families,

I hope you are feeling refreshed after the half term break. I wanted to let you know that the incoming Deputy Headteacher Rachel Howard will be with us most Thursdays and Fridays for the remainder of the school year. I have had several meetings with Liam the incoming Head teacher who will be coming into the school for a handover. They have been busy behind the scenes recruiting for the vacant leadership team for September which have successfully been filled. I will be at the school till Aug 31st and then passing the baton on to Liam.

RESPECT
We are a community. We make a difference.

Value of the month - Respect

Our 3 points:

- I will show I have respect for someone because I admire something about them
- I will show respect for someone's feelings, their wishes or their rights
- I will show respect for things other than humans or things that aren't living

It is my duty and privilege to foster an environment where children can grow not only academically but also as individuals with strong character. Today, I would like to emphasise the importance of respect and its impact on our school community. Incidentally, respect is our value of the month.

Respect forms the foundation of all successful relationships, whether it is among peers, teachers, staff members, or members of the wider community. At Primrose Hill, we strive to create a culture where respect is cherished and upheld, allowing everyone to thrive and excel.

Respect is a fundamental value that guides our actions and interactions within the school. It means treating each other with kindness, empathy, and consideration. When we show respect, we acknowledge the worth and dignity of everyone, valuing their unique perspectives and contributions.

In the classroom, respect is essential for fostering a positive and inclusive learning environment. Pupils who respect their teachers are more likely to actively engage in lessons, seek help when needed, and demonstrate a willingness to learn. On the other hand, teachers who respect their pupils create an atmosphere of trust, encouraging open communication and promoting student autonomy.

Beyond the classroom, respect extends to our fellow pupils and the broader school community. By treating others with respect, we promote a sense of belonging, acceptance, and diversity. We recognise that each person has their own strengths, challenges, and experiences, and we value them for who they are. Through respect, we build bridges that connect people from different backgrounds and foster a sense of unity.

Respect also extends to the physical environment we share. Taking care of our school premises, resources, and equipment demonstrates our respect for the opportunities and resources available to us. When we keep our surroundings clean and tidy, we contribute to a positive learning environment that benefits everyone.

As parents and carers, you play a vital role in instilling the value of respect in our students. By modelling respectful behaviour at home, teaching empathy and understanding, and promoting open dialogue, you contribute to the development of well-rounded individuals who positively impact their communities.

I kindly request your support in discussing the value of respect with your child and reinforcing the importance of respectful conduct both within and outside the school premises. Together, we can cultivate a respectful school community that prepares our students to become responsible global citizens.

Thank you for your continued partnership and support. Should you have any questions or suggestions, please do not hesitate to contact me. Let us work hand in hand to nurture a culture of respect that will shape the future of our children. **Best wishes, Harsha**



We hope you received Year 4's letters and have been able to collect some change to make a change to those in need. Please take any donations to your class teachers by Friday 16th June so we can organise presenting it to Nigel from Purple Mash, who introduce us to the charity, to pass it along on our behalf. Thank you

"At Bankuet, we believe that no one should be going hungry in the UK, and we need your help to get food banks what they need, when they need it.

When you donate through Bankuet, we combine your donation with others' and use them to bulk buy the items food banks most need. Please give what you can to support our communities at this challenging time."

You can access a story and activities to learn more about about Banquet and food banks by logging into Purple Mash and searching "Kobe Ketchup".

We were very pleased to be invited to Chisenhale Gallery last night to see our 3 entries artwork displayed as part of the nationwide Art Bytes competition.

Our 3 finalists were there with their families,
Yaroslav, Clara and Serena.

I am sure you will join me in saying how proud we are of them
and huge congratulations.



SCHOOL REPORT

End of Year Reports Drop in.

Monday 17th July
3:45- 4:45pm
Top Playground

Sports Day dates

We are very excited to inform you that we have the dates for Primrose Hill Sports Day! Please add them to your diary, don't miss out!

Tadpoles & Froglets - 30th June 9:15-10:15

Reception & KS1 - 30th June 13:45 - 15:30

KS2- 23rd June 10:00am-2:30pm

The Summer Fair

Saturday 8th July from 12pm to 4pm

(in the school grounds)



We are hoping to raise as much money as possible to go towards supporting the school's children and families. In particular, any contributions to/donations toward the **raffle prizes** would be hugely appreciated (this can also serve the purpose of advertising your services or company to our large school community).

As always, we are grateful for your help. If you would like any more information, please do call the school or email the contact below. Thank you,

Friends of Primrose Hill

admin@primrosehill.camden.sch.uk



Hi parents and carers,

A reminder (and explanation) of some of the things we are hoping that you will help us out with.

- **International Food Stalls.** Please let us know if you can make a **dish** to contribute – salty or sweet, as long as it's not free it's welcome!
- **Raffle tickets, prizes & wristbands.** From the 19 June, we will have a stall at the end of each school day in the playground from 3.25 – 3.45pm. Please bring any **donations** for the **raffle prize (wine, books, toiletries, toys etc.)** to this stall.
- **Face painting.** We would like parents who have some **face painting skills** to sit at the face painting stall for a slot. We can provide the materials to use (although if you have some, even better).
- **Hair braiding.** Anyone who can make **quick hairstyles (braids, glitter styles etc.)** we are hoping can help on this stall. If you have any clips, **accessories**, spray etc., please let us know.
- **Talent show.** Children and parents can **prepare** anything (spoken poetry, singing or dancing performance) to do on stage on the day.
- **Tombola.** We are asking parents to create the tombola prizes. These are **jars full of sweets/ treats/ pocket money toys** (maybe with a ribbon around it or something to make it look lovely)
- **Arts/crafts.** We are hoping that our families can contribute any materials to create art or craft (stickers, card, paint etc.).
- **Bake-off competition.** Bring your **best cake** on the day to enter (can you let us know if you are planning to do this beforehand so we have an idea of numbers). The head will select a winner to receive a Amazon voucher. Remember to keep your bakes **not free**.

Aside from all of the above, we also need **VOLUNTEERS** on the day to help with stalls, rides, catering etc. Remember, the more of us that help, the more time we can all enjoy as well.

If you can help with any of this, please let us know **ON THE WATSAPP GROUP** or email at admin@primrosehill.camden.sch.uk (entitle it: SUMMER FAIR) or speak to your **PARENT REP.**

Thank you,

From the Friends of Primrose Hill



WHY IS ATTENDANCE IMPORTANT?

At Primrose Hill we acknowledge there are clear links between:

- Attendance and attainment
- Attendance and safeguarding

We are committed to providing a high-quality education for all pupils. By attending school every day and on time children and young people can take full advantage of the educational opportunities available to them.

Research shows a direct link between high attendance and doing well at school.

Good attendance builds confidence, friendship and ambition.

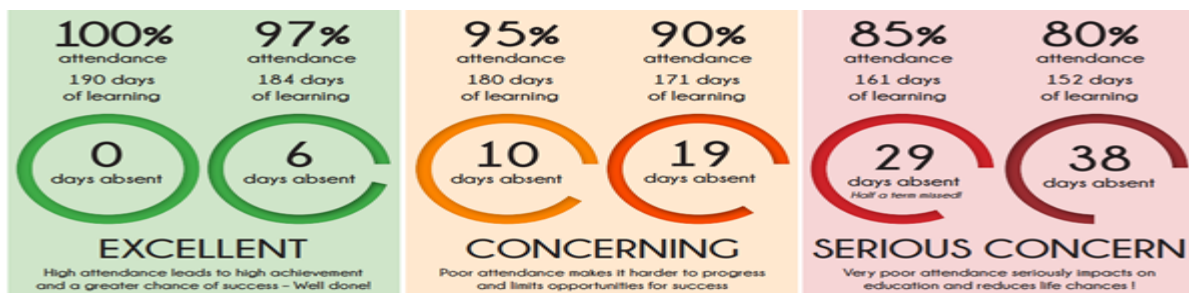
Good attendance is important because pupils:

- get on better with learning and other children.
- cope better with school routines, work and friendships.
- find learning easier because they do not miss out.
- are more successful moving between primary school, secondary school, higher education and employment or training.
- are known to be safe and well by us.

Parents and the school staff should work in partnership in making education a success and in ensuring that all children have full and equal access to all that the school has to offer.

As a school, we will encourage parents and carers to ensure that their child achieves maximum possible attendance and that any problems that prevent this are identified and acted on promptly. **It is parents' responsibility** to ensure that their children arrive at school on time and return home safely.

Attendance levels



- 97%+, expected attendance. This will help all aspects of a child's achievement and life in school. This will give them a good start in life and supports a positive work ethic.
- 97-91%, below expected attendance. As attendance falls, our concern increases. We follow our stepped approach to take action.

90% or lower, persistent absence. Absence is causing serious concern. It is highly likely to affect attainment and progress and is disruptive to the child's learning.

Not coming to school is a serious concern. However, each case is different and the school knows that there is no standard response. Consideration is given to all factors affecting attendance before deciding what intervention strategies to use. Our Attendance Policy outlines the steps that the school will take to manage and improve attendance.

The Attendance team includes Mandy Aplicano and Tara Kerrigan.



Class Photographs
Wednesday
28th June 2023
from 9:00am

Please be on time, not to get disappointed!



Please join the SEND Staff Team
every Monday at 9am in the
Community Room for a coffee
morning where you can meet
other parents/ carers and discuss
any concerns or raise any issues.
Everyone is Welcome!



THANKS FOR REMEMBERING
THIS IS A



PEANUT/NUT FREE
SCHOOL

SmartSign.com • 800-952-1457 • S-6061



PLEASE REMEMBER
WE ARE A NUT
FREE SCHOOL





HomeTalk

thoughtful conversations for families and schools

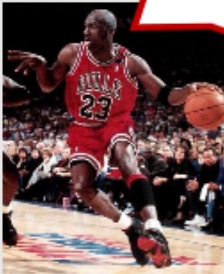
Let's talk about...
Competition



Quotes about competition

**DIALOGUE
WORKS**

You have competition every day because you set such high standards for yourself that you have to go out every day and live up to that.



Michael Jordan
basketball player

Competition is great. And as long as it's friendly and not a malicious thing, then I think it's cool.



Janet Jackson
singer-songwriter

A horse never runs so fast as when he has other horses to catch up and outpace.



Ovid
poet (43BC-17/18AD)

DialogueWorks Ltd © 2022

2

Caring thinking

Does your gain have to be someone else's loss?

Collaborative thinking

Is it a single team that competes, or the individuals within it? Or both?

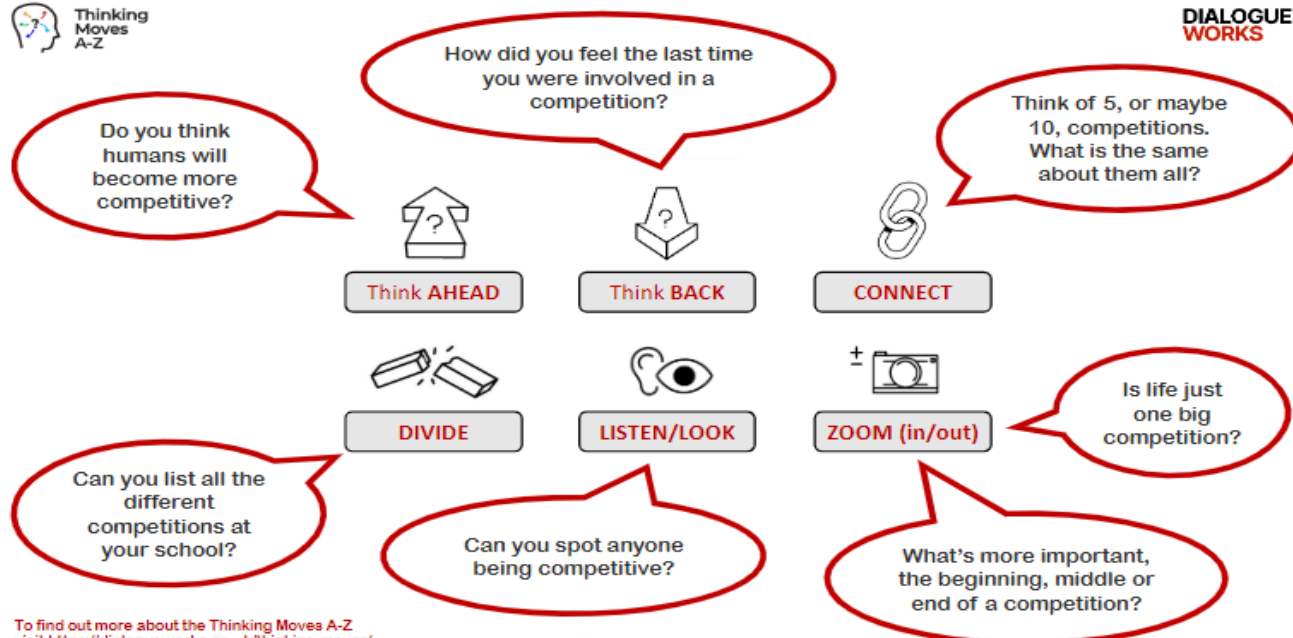


Creative thinking

Look around your dinner table. How many different competitions can you think up using what you can see?

Critical thinking

What might be the implications of everyone in a competition winning?



To find out more about the Thinking Moves A-Z, visit <https://dialogueworks.co.uk/thinking-moves/>

DialogueWorks Ltd © 2022

4

Stimulus

EYFS NURSERY SPORTS DAY

2014

<https://youtu.be/mf1NvplyYEIU>

Broadfield Primary School's Nursery Sports Day

There are all kinds of competitions taking place at Broadfield Primary School's sports day. How many different ones can you see?

Talking Points

- Which sport in the video do you think would be the hardest to play, and why?
- Some grown-ups were playing too. Would they be better than the children?
- Are there any competitions that children would be better at than grown-ups?

Activity

- Play 'concentration clap' with someone – see if you can clap once at the same time as they do. Take it in turns to be the one to start.
- Think of ways to get better at the game and try them out, then have a competition with lots of your friends and family. Is there a winner?

Stimulus

This camel
and this octopus
and these bears
are all psychic.
(Sort of.)

https://youtu.be/BRJQ1D_7g3g

Animals predicting World Cup match results

Here we see a range of animals that have been reported as predicting the outcome of football matches. What do you think?

Talking Points

- Are any of these animals more likely to be able to predict football results than the others?
- When we try to predict, is it just a guess?
- Is it even possible to predict the result of a competition – or anything?

Activity

- Pick a game to watch, either on TV or in real life.
- Make a list of all the things it would be good to know in order to help you predict the result.
- Have a go at predicting the result.
- How did you do? Would any other information have been helpful?

You are a star!

We are so proud of each and every one of you!
A big special mention for these children this week.
Well done!

EYFS Star Learners

The Grove: Everyone
N: Tadpoles Milo and Rei
N: Froglets Edie and Ema
R: Ladybirds - Kai and Romeo

You are a star!

We are so proud of each and every one of you!
A big special mention for these children this week.
Well done!

Y1 and Y2 Star Learners

Y1: Dragonflies - Harry & Hanna
Y1: Butterflies - Abbas & Fatima
Y2: Grasshoppers - the whole class!
Y2: Beetles - Niyah & Tyler

You are a star!

We are so proud of each and every one of you!
A big special mention for these children this week.
Well done!

Y3 and Y4 Star Learners

Y3: Squirrels Adrian and Rena
Y3: Bats All Class
Y4 Hedgehogs - Louise & Ajana
Y4 Foxes- 2 weeks worth of stars: Jingham, Lev, Jad & Klara!

You are a star!

We are so proud of each and every one of you!
A big special mention for these children this week.
Well done!

Y5 and Y6 Star Learners

Y5: Blackbirds - Luca, Suleiman and Frankie
Y5: Woodpeckers - Torri and Amir
Y6 Kestrels - Bela & Idris
Y6: Herons - Serra and Noah

You are a star!

EYFS

Froglets have been busy printing this week. We have been inspired by some amazing paintings by Kandinski to experiment with circles inside circles.



You are a star!

Y1 and Y2

Year 1 have been learning about the famous pilot, Amelia Earhart! They came up with lots of interesting questions to find out more about who she was and what it was like being a pilot.



You are a star!

Y5 and Y6



Attendance

Week 4 Tally? Who has got over 95% attendance?

	97.02%	★
	90.10%	
	86.97%	
	94.44%	
	87.93%	
	93.33%	

Attendance

Week 4 Tally? Who has got over 95% attendance?

	95.06%	★
	93.33%	
	92.26%	
	91.95%	
	97.62%	★★★
	95.51%	★
	95.98%	★
	87.50%	