

# Special educational needs and disabilities (SEND) policy

Primrose Hill Primary School



<b>Approved by:</b>	Aurora Roelofs	<b>Date:</b> 01.10.2023
---------------------	----------------	-------------------------

<b>Last reviewed on:</b>	01.10.2023
--------------------------	------------

<b>Next review due by:</b>	01.10.2024
----------------------------	------------

## Contents

1. Aims and objectives.....	4
2. Vision and values.....	4
3. Legislation and guidance.....	4
4. Inclusion and equal opportunities.....	5
5. Definitions.....	5
6. Roles and responsibilities.....	6
7. SEN information report.....	9
8. Our approach to SEND support.....	9
9. Our Additionally Resourced Provision.....	12
10. Expertise and training of staff.....	13
11. Links with external professional agencies.....	13
12. Admission and accessibility arrangements.....	13
13. Complaints about SEND provision.....	13
14. Monitoring and evaluation arrangements.....	15
15. Links with other policies and documents.....	15

---

## 1. Aims and objectives

Our special educational needs and disabilities (SEND) policy aims to:

- Make sure our school fully implements national legislation and guidance regarding pupils with SEND
- Set out how our school will:
  - Support and make provision for pupils with special educational needs and disabilities
  - Provide pupils with SEND access to all aspects of school life so they can engage in the activities of the school alongside pupils who do not have SEND
  - Help pupils with SEND fulfill their aspirations and achieve their best
  - Help pupils with SEND become confident individuals living fulfilling lives
  - Communicate with pupils with SEND and their parents or carers and involve them in discussions and decisions about support and provision for the pupil
  - Embody our school values of care, challenge and community in our provision for SEND as with our provision with all other children in our school.
- Explain the roles and responsibilities of everyone involved in providing for pupils with SEND
- Communicate with, and involve, pupils with SEND and their parents or carers in discussions and decisions about support and provision for the pupil
- Make sure the SEND policy is understood and implemented consistently by all staff

## 2. Vision and values

At our school we will provide all pupils with access to a broad and balanced curriculum.

We are committed to making sure all our pupils have the chance to thrive and supporting them to meet their full potential.

We are focused on creating an inclusive environment, where provision is tailored to the needs and abilities of pupils, no matter how varied.

We are an inclusive school and have an additionally resourced provision to further accommodate children with complex needs into our school community while allowing these children to access a specialised curriculum and set of interventions.

## 3. Legislation and guidance

This is based on the statutory Special Educational Needs and Disability (SEND) Code of Practice and the following legislation:

- Part 3 of the Children and Families Act 2014, which sets out schools' responsibilities for pupils with SEND
- The Special Educational Needs and Disability Regulations 2014, which set out local authorities' and schools' responsibilities for education, health and care (EHC) plans, SEN co-ordinators (SENCOs) and the special educational needs (SEN) information report
- The Equality Act 2010 (section 20), which sets out the school's duties to make reasonable adjustments for pupils with disabilities
- The Public Sector Equality Duty (section 149 of the Equality Act 2010), which set out the school's responsibilities to eliminate discrimination, harassment and victimisation; and advance equality of opportunity and foster good relations between people who share a protected characteristic (which includes having a disability) and those who don't share it
- The Governance Handbook, which sets out governors responsibilities for pupils with SEND

- The School Admissions Code, which sets out the school's obligation to admit all pupils whose education, health and care (EHC) plan names the school, and its duty not to disadvantage unfairly children with a disability or with special educational needs

## 4. Inclusion and equal opportunities

At our school we strive to create an inclusive teaching environment that offers all pupils, no matter their needs and abilities, a broad, balanced and challenging curriculum. We are committed to offering all pupils the chance to thrive and fulfil their aspirations.

We will achieve this by making reasonable adjustments to teaching, the curriculum and the school environment to make sure that pupils with SEND are included in all aspects of school life.

## 5. Definitions

### 5.1 Special educational needs

A pupil has SEN if they have a learning difficulty or disability that requires special educational provision to be made for them.

They have a **learning difficulty or disability** if they have:

- A significantly greater difficulty in learning than most others of the same age, or
- A disability which prevents or hinders them from making use of facilities of a kind generally provided for others of the same age in mainstream schools

**Special educational provision** is educational or training provision that is additional to, or different from, that made generally for other children or young people of the same age by mainstream schools.

### 5.2 Disability

Pupils are considered to have a **disability** if they have a physical or mental impairment that has a substantial and long-term adverse effect on their ability to do normal daily activities.

The school will make reasonable adjustments for pupils with disabilities, so that they are not at a substantial disadvantage compared with their peers.

### 5.3 The 4 areas of need

The needs of pupils with SEND are grouped into 4 broad areas. Pupils can have needs that cut across more than 1 area, and their needs may change over time.

Interventions will be selected that are appropriate for the pupil's particular area(s) of need, at the relevant time.

AREA OF NEED	
Communication and interaction	<p>Pupils with needs in this area have difficulty communicating with others. They may have difficulty understanding what is being said to them, have trouble expressing themselves, or do not understand or use the social rules of communication.</p> <p>Pupils who are on the autism spectrum often have needs that fall in this category.</p>

AREA OF NEED	
Cognition and learning	<p>Pupils with learning difficulties usually learn at a slower pace than their peers. A wide range of needs are grouped in this area, including:</p> <ul style="list-style-type: none"> <li>• Specific learning difficulties, which impact 1 or more specific aspects of learning, such as: dyslexia, dyscalculia and dyspraxia</li> <li>• Moderate learning difficulties</li> <li>• Severe learning difficulties</li> <li>• Profound and multiple learning difficulties, which is where pupils are likely to have severe and complex learning difficulties as well as a physical disability or sensory impairment</li> </ul>
Social, emotional and mental health	<p>These needs may reflect a wide range of underlying difficulties or disorders. Pupils may have:</p> <ul style="list-style-type: none"> <li>• Mental health difficulties such as anxiety, depression or an eating disorder</li> <li>• Attention deficit disorder, attention deficit hyperactive disorder or attachment disorder</li> <li>• Suffered adverse childhood experiences</li> </ul> <p>These needs can manifest in many ways, for example as challenging, disruptive or disturbing behaviour, or by the pupil becoming withdrawn or isolated.</p>
Sensory and/or physical	<p>Pupils with these needs have a disability that hinders them from accessing the educational facilities generally provided.</p> <p>Pupils may have:</p> <ul style="list-style-type: none"> <li>• A sensory impairment such as vision impairment, hearing impairment or multi-sensory impairment</li> <li>• A physical impairment</li> </ul> <p>These pupils may need ongoing additional support and equipment to access all the opportunities available to their peers.</p>

## 6. Roles and responsibilities

### 6.1 The SENCO

The SENCO and assistant head for inclusion at our school is Aurora Roelofs

They will:

- Inform any parents that their child may have SEN and then liaise with them about the pupil's needs and any provision made
- Work with the headteacher and SEN governor to determine the strategic development of the SEND policy and provision in the school
- Have day-to-day responsibility for the operation of this SEND policy and the co-ordination of specific provision made to support individual pupils with SEN, including those who have EHC plans
- Provide professional guidance to colleagues and liaise and work with staff, parents, and other agencies to make sure that pupils with SEN receive appropriate support and high-quality teaching

- Advise on the graduated approach to providing SEN support and differentiated teaching methods appropriate for individual pupils
- Advise on the deployment of the school's delegated budget and other resources to meet pupils' needs effectively
- Be a point of contact for external agencies, especially the local authority (LA) and its support services, and work with external agencies to ensure that appropriate provision is provided
- Liaise with potential next providers of education to make sure that the pupil and their parents are informed about options and that a smooth transition is planned
- When a pupil moves to a different school or institution: Make sure that all relevant information about a pupil's SEN and the provision for them are sent to the appropriate authority, school or institution in a timely manner
- Work with the headteacher and school governors to make sure the school meets its responsibilities under the Equality Act 2010 with regard to reasonable adjustments and access arrangements
- Make sure the school keeps its records of all pupils with SEND up to date and accurate
- With the headteacher, monitor to identify any staff who have specific training needs regarding SEN, and incorporate this into the school's plan for continuous professional development
- With the headteacher, regularly review and evaluate the breadth and impact of the SEND support the school offers or can access, and co-operate with the LA in reviewing the provision that is available locally and in developing the local offer
- Prepare and review information for inclusion in the school's SEN information report and any updates to this policy
- With the headteacher and teaching staff, identify any patterns in the school's identification of SEN, both within the school and in comparison with national data, and use these to reflect on and reinforce the quality of teaching

## 6.2 The governing board

The governing board is responsible for making sure the following duties are carried out, though the duties can be delegated to a committee or an individual:

- Co-operate with the LA in reviewing the provision that is available locally and developing the local offer
- Do all it can to make sure that every pupil with SEND gets the support they need
- Make sure that pupils with SEND engage in the activities of the school alongside pupils who don't have SEND
- Inform parents when the school is making special educational provision for their child
- Make sure that the school has arrangements in place to support any pupils with medical conditions
- Provide access to a broad and balanced curriculum
- Have a clear approach to identifying and responding to SEND
- Provide an annual report for parents on their child's progress
- Record accurately and keep up to date the provision made for pupils with SEND
- Publish information on the school website about how the school is implementing its SEND policy, in a SEN information report
- Publish information about the arrangements for the admission of disabled children, the steps taken to prevent disabled children being treated less favourably than others, the facilities provided to assist access of disabled children, and the school's accessibility plans
- Make sure that there is a qualified teacher designated as SENCO for the school and that the key responsibilities of the role are set out, and monitor the effectiveness of how these are carried out
- Determine their approach to using their resources to support the progress of pupils with SEND

### **6.3 The SEND link governor**

The SEND link governor is Alice Gray

The SEND governor will:

- Help to raise awareness of SEND issues at governing board meetings
- Monitor the quality and effectiveness of SEND provision within the school and update the governing board on this
- Work with the headteacher and SENCO to determine the strategic development of the SEND policy and provision in the school

### **6.4 The headteacher**

The headteacher will:

- Work with the SENCO and SEND link governor to determine the strategic development of the SEND policy and provision within the school
- Work with the SENCO and school governors to make sure the school meets its responsibilities under the Equality Act 2010 with regard to reasonable adjustments and access arrangements
- Have overall responsibility for, and awareness of, the provision for pupils with SEND, and their progress
- Have responsibility for monitoring the school's notional SEND budget and any additional funding allocated by the LA to support individual pupils
- Make sure that the SENCO has enough time to carry out their duties
- Have an overview of the needs of the current cohort of pupils on the SEND register
- Advise the LA when a pupil needs an EHC needs assessment, or when an EHC plan needs an early review
- With the SENCO, monitor to identify any staff who have specific training needs regarding SEN, and incorporate this into the school's plan for continuous professional development
- With the SENCO, regularly review and evaluate the breadth and impact of the SEND support the school offers or can access, and co-operate with the LA in reviewing the provision that is available locally and in developing the local offer
- With the SENCO and teaching staff, identify any patterns in the school's identification of SEN, both within the school and in comparison with national data, and use these to reflect on and reinforce the quality of teaching

### **6.5 Class teachers**

Each class teacher is responsible for:

- Planning and providing high-quality teaching that is differentiated to meet pupil needs through a graduated approach
- The progress and development of every pupil in their class
- Working closely with any teaching assistants or specialist staff to plan and assess the impact of support and interventions, and consider how they can be linked to classroom teaching
- Working with the SENCO to review each pupil's progress and development, and decide on any changes to provision
- Ensuring they follow this SEND policy and the SEN information report
- Communicating with parents regularly to:
  - Set clear outcomes and review progress towards them
  - Discuss the activities and support that will help achieve the set outcomes

- o Identify the responsibilities of the parent, the pupil and the school
- o Listen to the parents' concerns and agree their aspirations for the pupil

## **6.6 Parents or carers**

Parents or carers should inform the school if they have any concerns about their child's progress or development.

Parents or carers of a pupil on the SEND register will always be given the opportunity to provide information and express their views about the pupil's SEND and the support provided. They will be invited to participate in discussions and decisions about this support. They will be:

- Invited to twice termly coffee mornings for parents and carers of children with SEND
- Asked to provide information about the impact of SEN support outside school and any changes in the pupil's needs
- Be sent IPMs (SEND support plans) with termly targets on
- Given the opportunity to share their concerns and, with school staff, agree their aspirations for the pupil
- Given an annual report on the pupil's progress by class teachers
- Inclusion adults will be present on parents' evenings to support with feedback of information to parents where needed
- (where children have EHCPs) will have annual review meetings with teachers and the SENDCo and any other professionals that they request at the meeting

The school will take into account the views of the parent or carer in any decisions made about the pupil.

## **6.7 The pupil**

Pupils will always be given the opportunity to provide information and express their views about their SEND and the support provided. They will be invited to participate in discussions and decisions about this support. This might involve the pupil:

- Explaining what their strengths and difficulties are
- Contributing to setting targets or outcomes
- Attending review meetings where appropriate
- Annual review presentations or videos
- Giving feedback on the effectiveness of interventions

The pupil's views will be taken into account in making decisions that affect them, whenever possible.

## **7. SEND information report**

The school publishes a SEND information report on its website, which sets out how this policy is implemented in the school.

The information report will be updated annually and as soon as possible after any changes to the information it contains.



## 8. Our approach to SEND support

### 8.1 Identifying pupils with SEND and assessing their needs

We will assess each pupil's current skills and levels of attainment when they start at the school. This will build on information from previous settings and Key Stages, where appropriate. We will also consider any evidence that the pupil may have a disability and if so, what reasonable adjustments the school may need to make.

Class teachers will regularly assess the progress of all pupils and identify any whose progress:

- Is significantly slower than that of their peers starting from the same baseline
- Fails to match or better their previous rate of progress
- Fails to close the attainment gap between them and their peers
- Widens the attainment gap

This may include progress in areas other than attainment, for example, wider development or social needs.

When teachers identify an area where a pupil is making slow progress, they will target the pupil's area of weakness with differentiated, high-quality teaching. If progress does not improve, the teacher will raise the issue with the SENCO to have an initial discussion about whether this lack of progress may be due to a special educational need. Where necessary they will, in consultation with the pupil's parents or carers, consider consulting an external specialist.

Slow progress and low attainment will not automatically mean a pupil is recorded as having SEN.

Potential short-term causes of impact on behaviour or performance will be considered, such as bullying or bereavement. Staff will also take particular care in identifying and assessing SEN for pupils whose first language is not English.

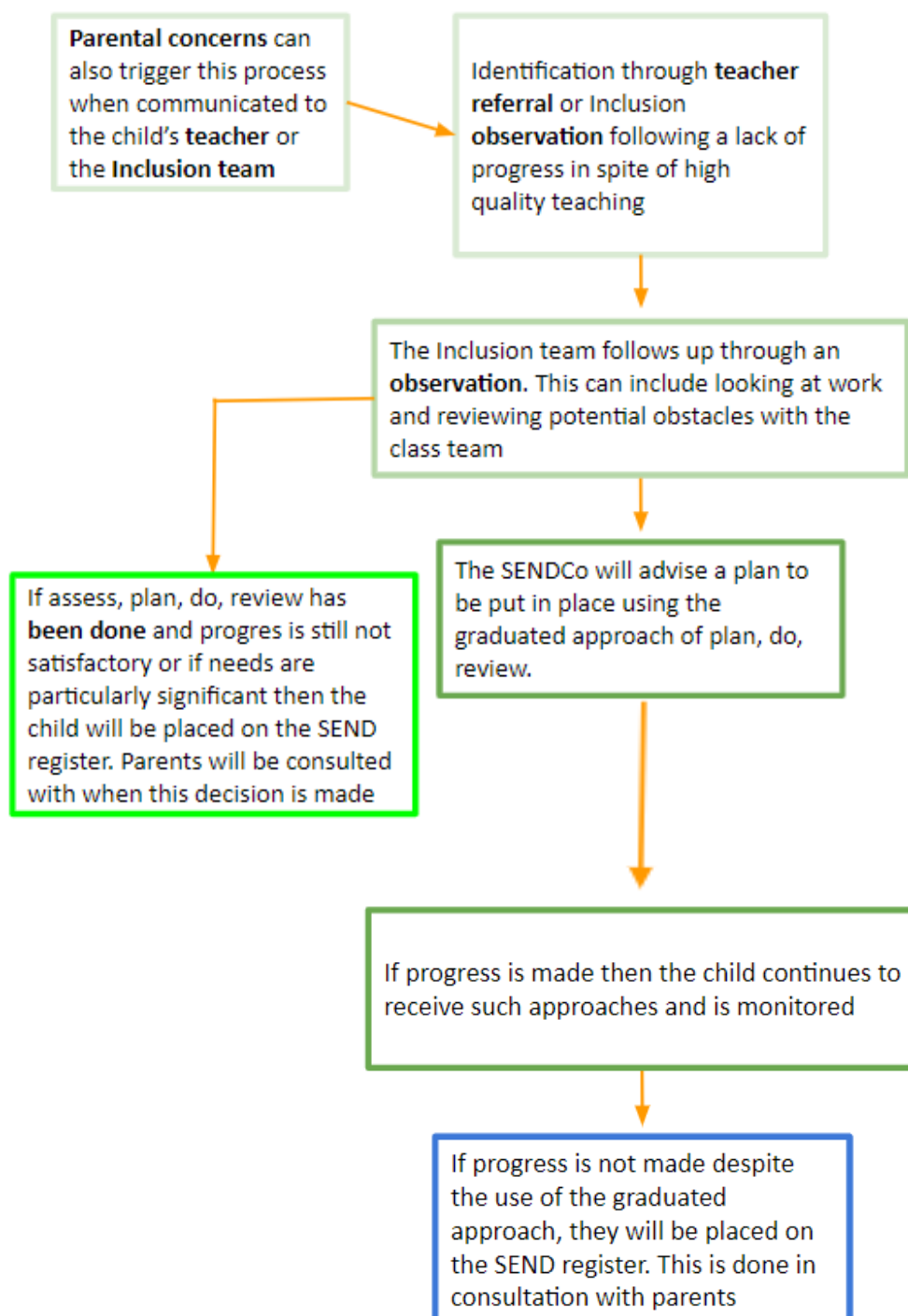
When deciding whether the pupil needs special educational provision, we will start with the desired outcomes, including the expected progress and attainment, and the views and the wishes of the pupil and their parents. We will use this to determine the support that is needed and whether we can provide it by adapting our core offer, or whether something different or additional is needed.

If a pupil is joining the school, and:

- Their previous setting has already identified that they have SEN
- They are known to external agencies
- They have an education, health and care plan (EHCP)

then the school will work in a multi-agency way to make sure we get relevant information before the pupil starts at school, so support can be put in place as early as possible.

## Our approach to identifying SEND



## 8.2 Consulting and involving pupils and parents

The school will put the pupil and their parents at the heart of all decisions made about special educational provision.

When we are aiming to identify whether a pupil needs special education provision, we will have an early discussion with the pupil and their parents. These conversations will make sure that:

- Everyone develops a good understanding of the pupil's areas of strength and difficulty
- We take into account any concerns the parents have
- Everyone understands the agreed outcomes sought for the child
- Everyone is clear on what the next steps are

Notes of these early discussions will be added to the pupil's record and given to their parents.

We will notify parents if it is decided that a pupil will receive special educational provision.

We seek to engage SEND parents in our school community through coffee mornings and trainings, bringing external professionals and experts in where relevant.

Our SEND information report gives more details on how we involve pupils and parents in the provision and education provided for children with SEND.

## 8.3 The graduated approach to SEN support

Once a pupil has been identified as having SEN, we will take action to remove any barriers to learning, and put effective special educational provision in place. This support will be delivered through successive rounds of a 4-part cycle known as the graduated approach.

### 1. Assess

The pupil's class teacher and the SENCO will carry out a clear analysis of the pupil's needs. The views of the pupil and their parents will be taken into account. The school may also seek advice from external support services. At Primrose Hill we use a teacher referral system where they complete a SEND referral which is reviewed by the SENDCo.

The assessment will be reviewed regularly to help make sure that the support in place is matched to the pupil's need. For many pupils, the most reliable way to identify needs is to observe the way they respond to an intervention.

### 2. Plan

In consultation with the parents and the pupil, the teacher and the SENCO will decide which adjustments, interventions and support will be put into place, the expected outcomes, and a clear date for review.

All staff who work with the pupil will be made aware of the pupil's needs, the outcomes sought, the support provided and any teaching strategies or approaches that are needed. This information will be recorded on our management information system and will be made accessible to staff in a Individual Provision Map (SEND support plan).

Parents will be fully aware of the planned support and interventions, and may be asked to reinforce or contribute to progress at home.

### 3. Do

The pupil's class or subject teacher retains overall responsibility for their progress.

Where the plan involves group or 1-to-1 teaching away from the main class or subject teacher, they still retain responsibility for the pupil. They will work closely with any teaching assistants or specialist staff involved, to plan and assess the impact of support and interventions and how they can be linked to classroom teaching.

The SENCO will support the teacher in further assessing the pupil's particular strengths and weaknesses, in problem solving and advising on how to implement support effectively.

### 4. Review

The effectiveness of the support and interventions and their impact on the pupil's progress will be reviewed in line with the agreed date.

We will evaluate the impact and quality of the support and interventions. This evaluation will be based on:

- The views of the parents and pupils
- The level of progress the pupil has made towards their outcomes
- The views of teaching staff who work with the pupil

The teacher and the SENCO will revise the outcomes and support in light of the pupil's progress and development, and in consultation with the pupil and their parents.

## **8.4 Levels of support**

### **School-based SEN provision**

Pupils receiving SEN provision will be placed on the school's SEND register. These pupils have needs that can be met by the school through the graduated approach. Where the pupil's needs cannot be adequately met with in-house expertise, staff will consider involving an external specialist as soon as possible.

The provision for these pupils is funded through the school's notional SEND budget.

On the census these pupils will be marked with the code K.

### **Education, health and care (EHC) plan**

Pupils who need more support than is available through the school's school-based SEN provision may be entitled to an EHC plan. The plan is a legal document that describes the needs of the pupil, the provision that will be put in place, and the outcomes sought.

The provision for these pupils will be funded from the school's notional SEND budget, and potentially from the LA (from the high-level needs funding block of the dedicated schools grant).

On the census these pupils will be marked with the code E.

### **IPMs (SEND support plans)**

These are plans that every child will have who is on the SEND register. They give a information on the child's strengths and difficulties. They equally give an overview of the interventions that the child is receiving as well as 2 - 4 targets for each child.

These are reviewed termly. Teachers review these however before this they will have a meeting with the Assistant head of inclusion and SENDCo about their class provision and the children with SEND in their classes. They then review the targets.

Once this is done, these plans will be sent home so that parents can be included in this process and understand their children's targets. We ensure similarly to share these with children themselves where appropriate.

## **8.5 Evaluating the effectiveness of SEN provision**

We evaluate the effectiveness of provision for pupils with SEN by:

- Tracking pupils' progress, including by using provision maps
- Carrying out the review stage of the graduated approach in every cycle of SEN support
- Sharing targets with pupils and receiving their feedback
- Monitoring by the SENCO
- Holding annual reviews for pupils with EHC plans

- Getting feedback from the pupil and their parents

## **9. Our Additionally Resourced Provision - The Grove**

Primrose Hill Primary School was commissioned by Camden local authority to provide specialist support for EHCP children with a diagnosis of Autism (ASD) and who have complex needs. Our additionally resourced provision is there to support children manage integration into mainstream schooling but with additional support.

The ARP has 14 children on role. ARP places for EHCP children with a diagnosis of ASD will be allocated directly by Camden in conjunction with the school.

We aim to provide children with specialist support to meet their needs as set out in their EHCP. This includes access to additional therapy rooms for interventions and group work, access to the Soft Play and Sensory Room, support from health (including Speech and Language, occupational Therapy), and a higher ratio of adult support depending on the specific child's needs. We are an inclusive school and the aim for each of our ARP children is ultimately to include them as much as is appropriate within the mainstream class with additional support and adaptation. Additional support in class might include the use of visuals, a workstation, communication system or movement breaks.

To aid integration of children in the ARP, we ensure each child has an integration plan and clear targets for next steps in terms of integration with mainstream teaching. While some children in the ARP are in The Grove classroom for 50% or more of their time, some children are in our mainstream the majority of the time but with additional support.

Those in the Grove receive a specialised alternative curriculum with use of more fine grained assessment steps as informed by the SCERTS approach to autism.

## **10. Expertise and training of staff**

Training will regularly be provided to teaching and support staff. We regularly use external professionals and experts to bolster this training or deliver targeted training. The headteacher and the SENCO will continuously monitor to identify any staff who have specific training needs and will incorporate this into the school's plan for continuous professional development.

## **11. Links with external professional agencies**

The school recognises that it won't be able to meet all the needs of every pupil. Whenever necessary the school will work with external support services such as:

- Speech and language therapists including a mainstream SALT and a complex needs SALT who services children with Additionally Resourced Provision (ARP) funding
- Our Social Emotional and Mental Health outreach teacher
- A language and communication outreach teacher
- Educational psychologists
- Occupational therapist who has experience with complex needs
- Physiotherapists
- General practitioners or pediatricians
- School nurses
- An art therapist
- A music therapist

- An integrative therapist
- Child and adolescent mental health services (CAMHS)
- Social services

## 11. Admission and accessibility arrangements

For in-year applications, if a parent or carer states on the application that their child has SEND the office will put them in touch with the SENDCo and they will join the admissions meeting to get a better understanding of needs and how their transition to the school can be managed.

The admissions policy is in this order for children with SEND:

1. Looked after children
2. Siblings
3. SEND providing our setting can meet their needs
4. Children whose parent is a qualified teacher for more than 2 years
5. Other children living closest to the school

### 11.2 Accessibility arrangements

- The steps you have taken to prevent disabled pupils from being treated less favourably than other pupils
- The facilities you provide to help disabled pupils access your school, including the provision of auxiliary aids and services
- You can find our accessibility plan on our website under policies. It sets out how we:
  - o Increase the extent to which disabled pupils can participate in the curriculum
  - o Improve the physical environment to enable disabled pupils to take better advantage of the education, benefits, facilities and services you provide
  - o Improve the availability of accessible information to disabled pupils

## 13. Complaints about SEND provision

Where parents have concerns about our school's SEND provision, they should first raise their concerns informally with the class teacher in the first instance or the Assistant head of inclusion and SENDCo . We will try to resolve the complaint informally in the first instance. If this does not resolve their concerns, parents are welcome to submit their complaint formally.

Formal complaints about SEND provision in our school should be made to the Head Teacher in the first instance. They will be handled in line with the school's complaints policy. This policy can be found on our website alongside all other relevant policies about the school's running.

If the parent or carer is not satisfied with the school's response, they can escalate the complaint. In some circumstances, this right also applies to the pupil themselves.

To see a full explanation of suitable avenues for complaint, see pages 246 and 247 of the [SEN Code of Practice](#).

Camden offers a SEND mediation service, and you can access more information about this service on the kids.org.uk website at the following link: <http://www.kids.org.uk/Event/sen-mediation-service>

SENDIAS similarly can provide guidance on matters relating to your child and their SEND support:

Camden SENDIAS

Phone number: 0207 974 6264

By email: [SENDIASS@camden.gov.uk](mailto:SENDIASS@camden.gov.uk)

<https://sendiasscamden.co.uk/contact-us/>

## 13. Monitoring and evaluation arrangements

### 13.1 Evaluating the effectiveness of the policy

We are constantly looking for ways to improve our SEND policy. We will do this by evaluating whether or not we are meeting our objectives set out in section 1.

We will evaluate how effective our SEND provision is with regards to:

- All staff's awareness of pupils with SEND at the start of the autumn term
- How early pupils are identified as having SEND
- Pupils' progress and attainment once they have been identified as having SEND
- Whether pupils with SEND feel safe, valued and included in the school community
- If pupils with SEND are achieving targets on their IPMs (SEND support plans) or from their annual reviews
- Comments and feedback from pupils and their parents

### 13.2 Monitoring the policy

This policy will be reviewed by the Assistant head of inclusion and SENDCo Aurora Roelofs **every year**. It will also be updated when any new legislation, requirements or changes in procedure occur during the year.

It will be approved by the full governing board.

## 14. Links with other policies and documents

This policy links to the following documents, all of which can be found on our website under policies:

- SEND information report
- The local offer which is included on the SEND page of our website but also in the SEND information report
- Accessibility plan
- Behaviour policy
- Equality information and objectives
- Supporting pupils with medical conditions policy
- Attendance policy
- Safeguarding / child protection policy
- Complaints policy